

JRC ECDiS JAN-9201, JAN-7201  
JRC ECDiS Type Specific Training

# Program Manual(online)

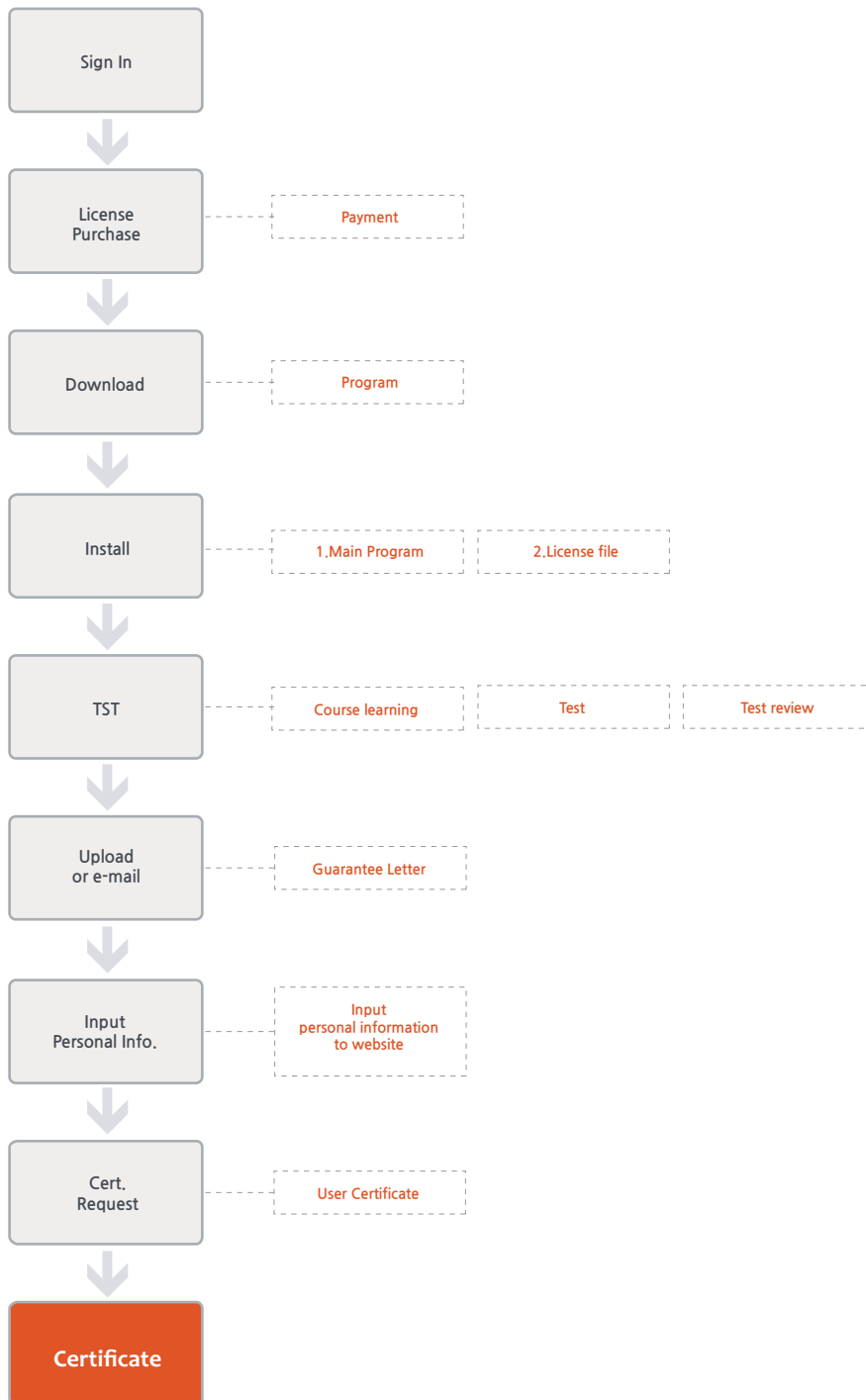
---

English

# CONTENTS

1. Installation	3
1.1. Installation	4
2. Execution	6
2.1. Sign in	7
3. Screen and menu	9
3.1. Screen configuration	10
3.2. Program menu description	11
3.3. Course menu description	16
3.4. Operation panel description	23
4. Learning	25
4.1. Learning overview	26
4.2. Learning course	27
4.3. Exercise course - Step by step	30
4.4. Exercise course - Practice by oneself	35
4.5. Penalty of Practice by oneself	37
5. Test	40
5.1. Test overview	41
5.2. Start the Test	42
5.3. Test result	47
6. Test Review	49
6.1. Test review	50
7. User verification and Certification	53
7.1. User verification and Certification	54
8. Tips	56
8.1. Description of Online mode and Offline mode	57
8.2. Program update	58
8.3. Learning records synchronization	60
8.4. Explanation of Terms	61

# PROCESS



# 1. Installation

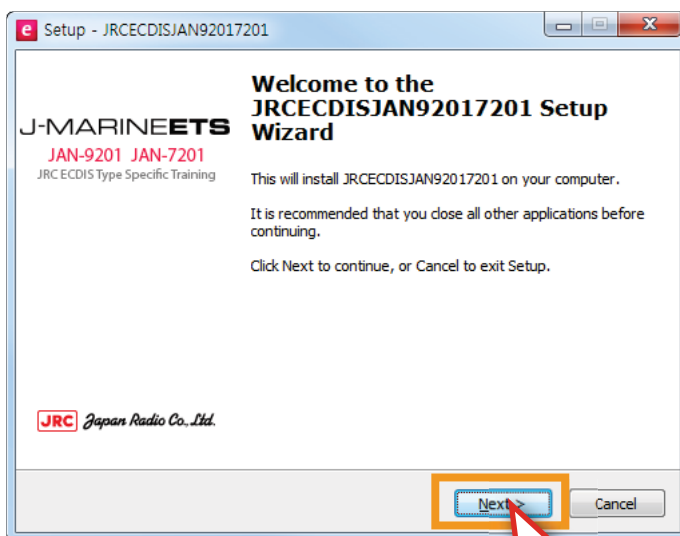
1. Installation

# 1. Installation

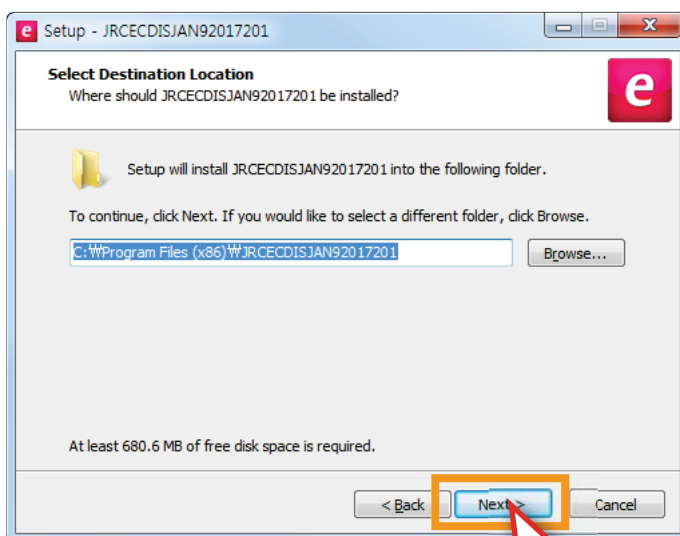
## 1. Installation



<Figure 1-1>



<Figure 1-2>



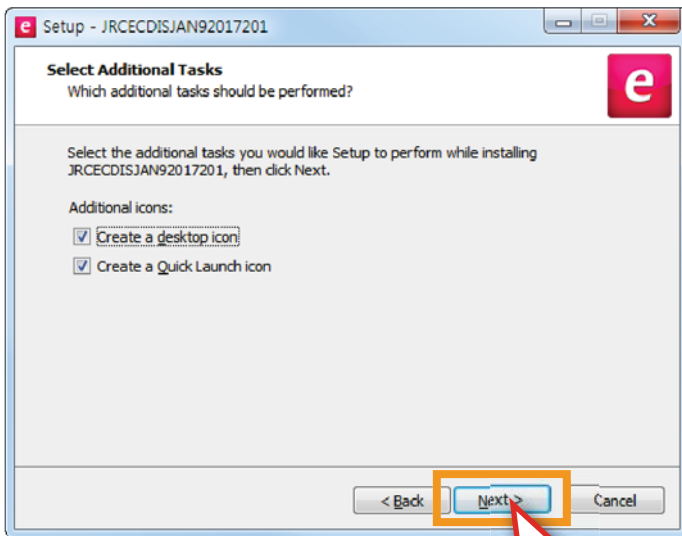
<Figure 1-3>

- 1) 'JRCECDISJAN92017201 Setup.exe'  
Double-click the file to install the program.  
<Figure 1-1>

- 2) The window will pop up, shown as <Figure 1-2>.  
Click the <Next> button.

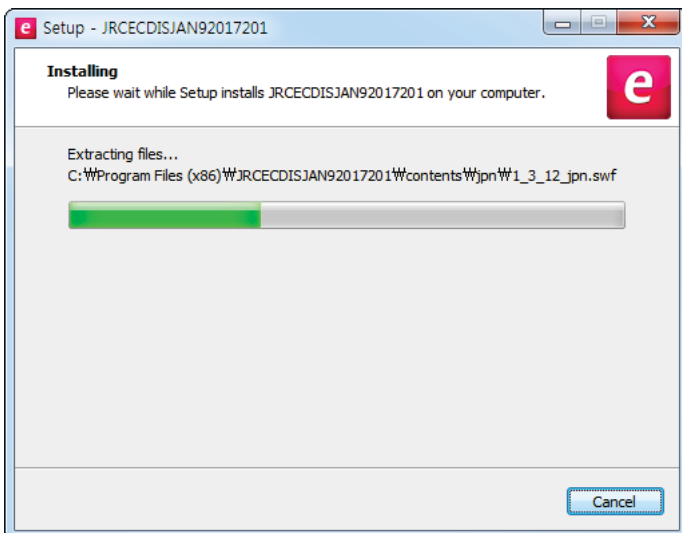
- 3) Click the <Next> button.  
<Figure 1-3>

# 1. Installation



<Figure 1-4>

- 4) Check 'Create a desktop icon' and 'Create a Quick Launch icon', then click the <Next> button.  
<Figure 1-4>



<Figure 1-5>

- 5) Installation is now in progress.  
<Figure 1-5>



<Figure 1-6>

- 6) 'JRC ECDIS JAN-9201, JAN-7201' Installation is completed. Click the <Finish> button.  
<Figure 1-6>

## 2. Execution

1. Sign in

## 2. Execution

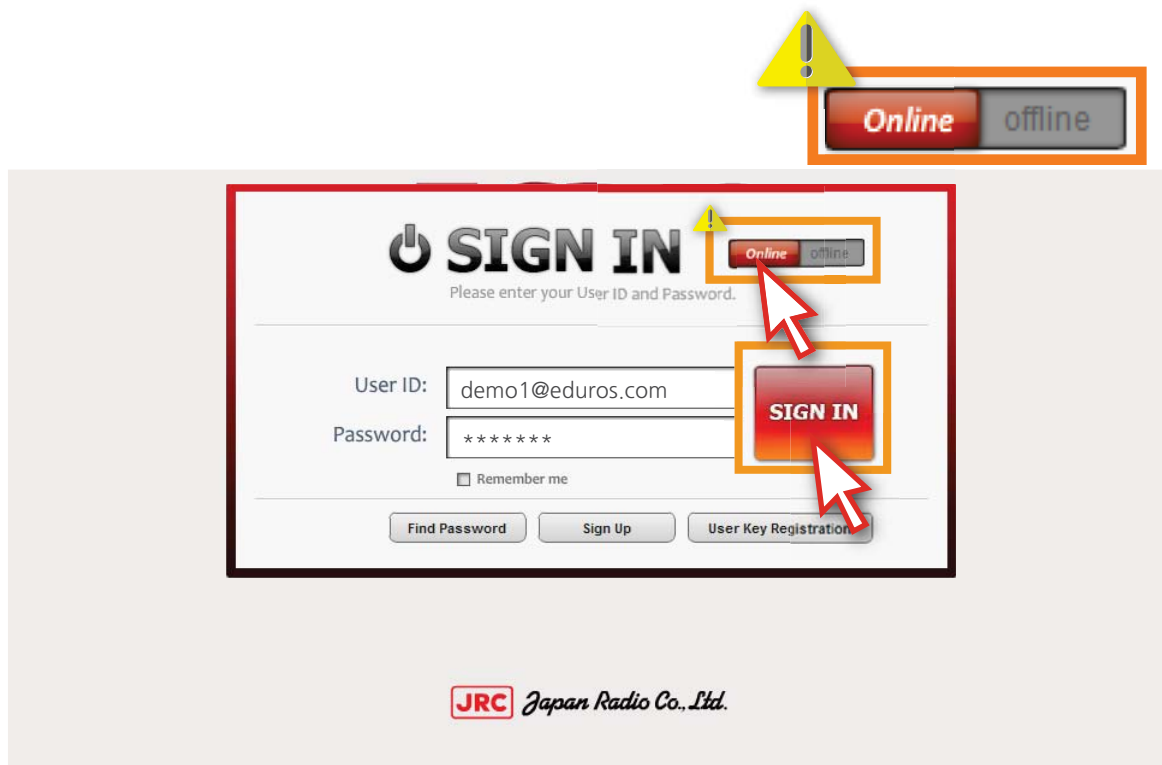
### 1. Sign in

1) To run the program, click the 'JRC ECDIS icon'. <Figure 2-1>



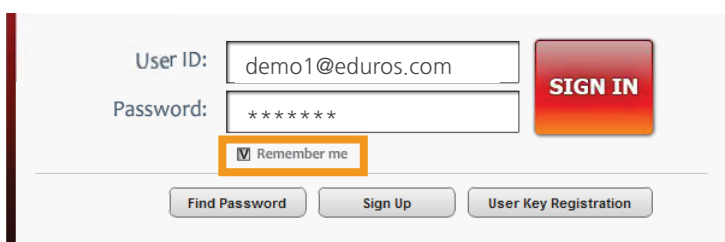
<Figure 2-1>

2) Choose 'Online' when the 'SIGN IN' window pops up, then enter 'ID' and 'password' and click 'SIGN IN' button. As shown below <Figure 2-2>

A screenshot of a 'SIGN IN' window. At the top right, there are two buttons: 'Online' (highlighted in red) and 'offline' (grey). Below this is a red-bordered box containing the 'SIGN IN' form. The form has the text 'Please enter your User ID and Password.' followed by two input fields: 'User ID: demo1@eduros.com' and 'Password: \*\*\*\*\*'. Below the password field is a checkbox labeled 'Remember me'. At the bottom of the form are three buttons: 'Find Password', 'Sign Up', and 'User Key Registration'. A red mouse cursor arrow is pointing at the 'SIGN IN' button. A yellow warning triangle icon is positioned above the 'SIGN IN' button. At the bottom of the window is the JRC logo and the text 'Japan Radio Co., Ltd.'.

<Figure 2-2>

#### Auto Login

A screenshot of the 'Auto Login' form. It shows the 'User ID' field with 'demo1@eduros.com' and the 'Password' field with '\*\*\*\*\*'. The 'Remember me' checkbox is checked and highlighted with a red box. The 'SIGN IN' button is also visible. Below the form are the 'Find Password', 'Sign Up', and 'User Key Registration' buttons.

Sign in with checking 'Remember me', when you restart the program, user's ID and password will be shown on the popup SIGN IN window.



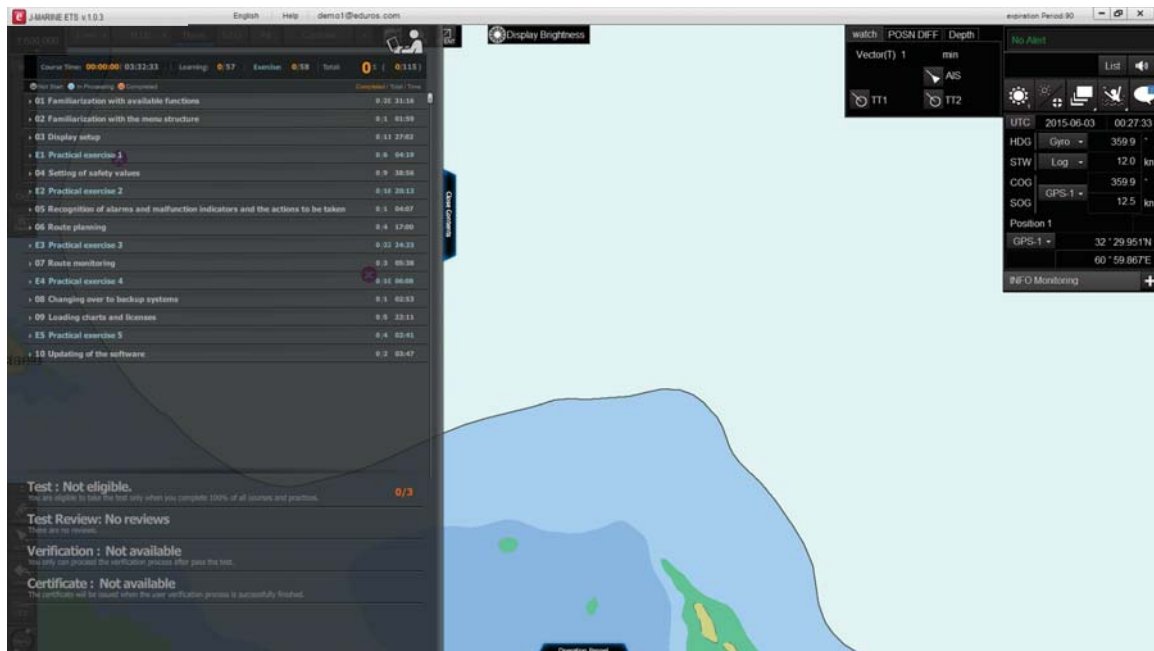
## 2. Execution

3) Select the user language that you prefer among English, Japanese, Korean.<Figure 2-3>



<Figure 2-3>

4) The main screen appears. <Figure 2-4>



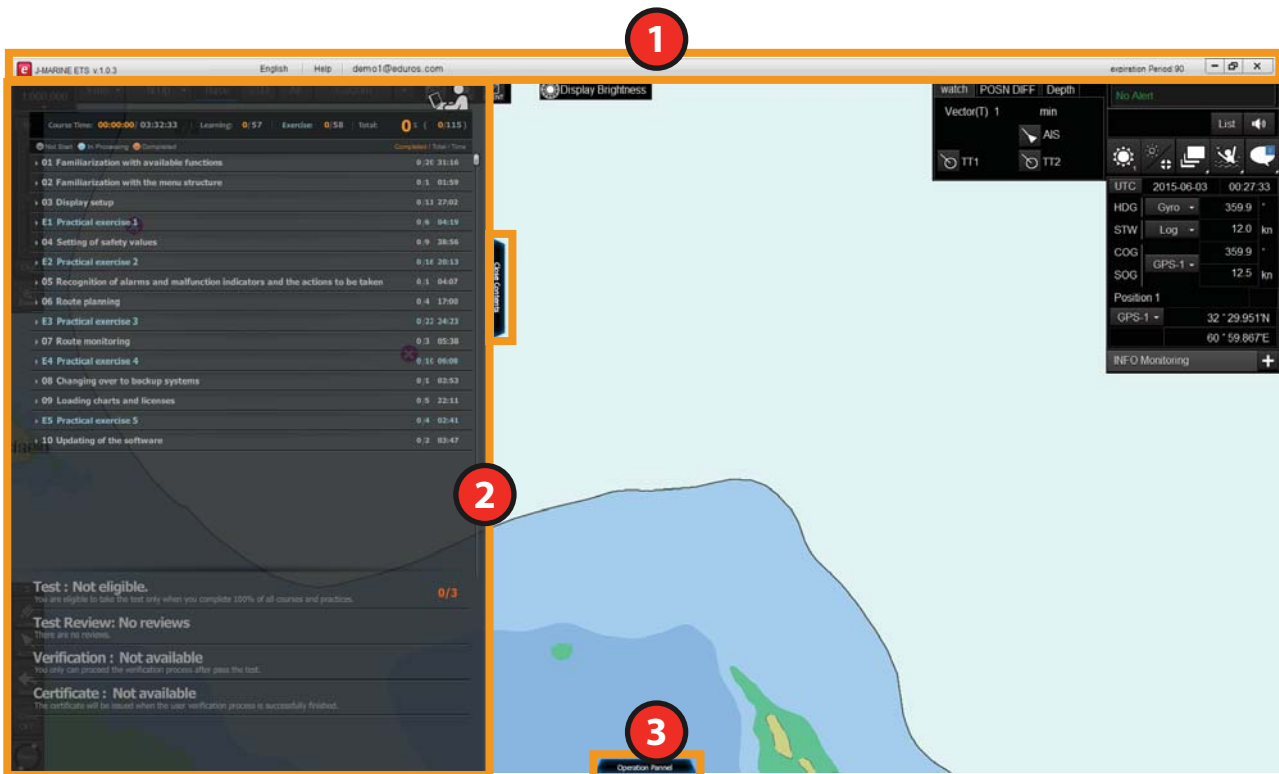
<Figure 2-4>

# 3. Screen and menu

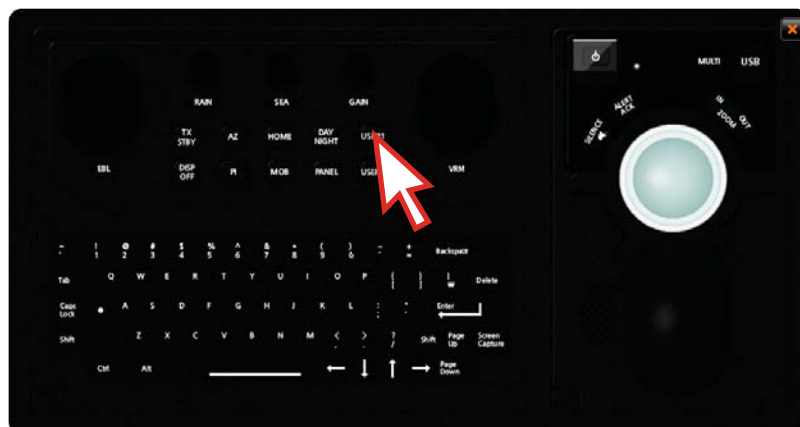
1. Screen configuration
2. Program menu description
3. Course menu description
4. Operation panel description

# 3. Screen and menu

## 1. Screen configuration

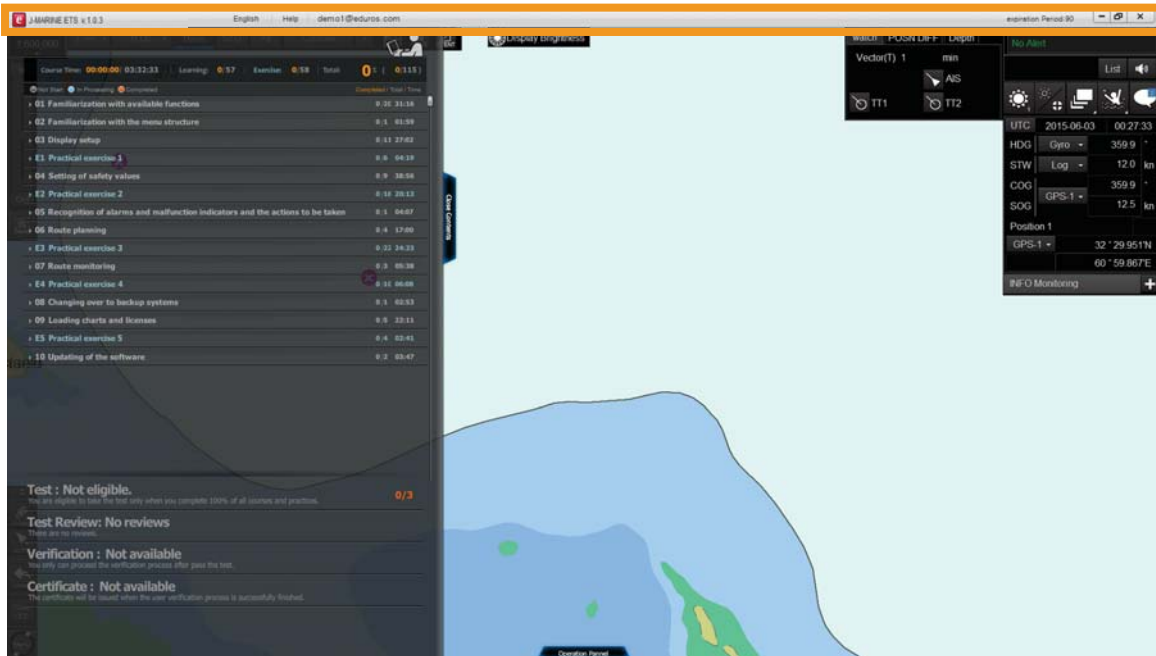


- 1 [Program Menu]**  
It includes such functions as Language selection, Updates, Sync log, Sign Out, term of validity and Help etc.
- 2 [Course Menu]**  
It includes entire courses and the test part of Program.  
You can learn all the courses alone and take the test in the end.
- 3 [Operation panel Menu]**  
It is a graphical menu which displays the names and functions of each part on the operation panel.

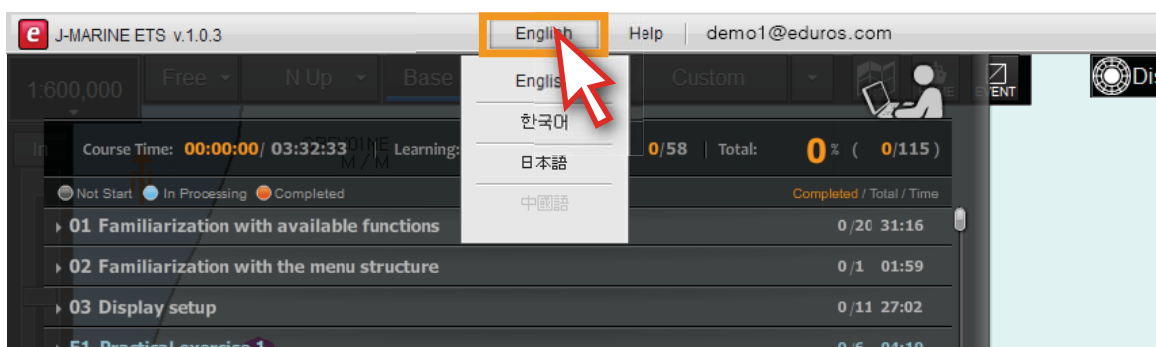


### 3. Screen and menu

## 2. Program menu description



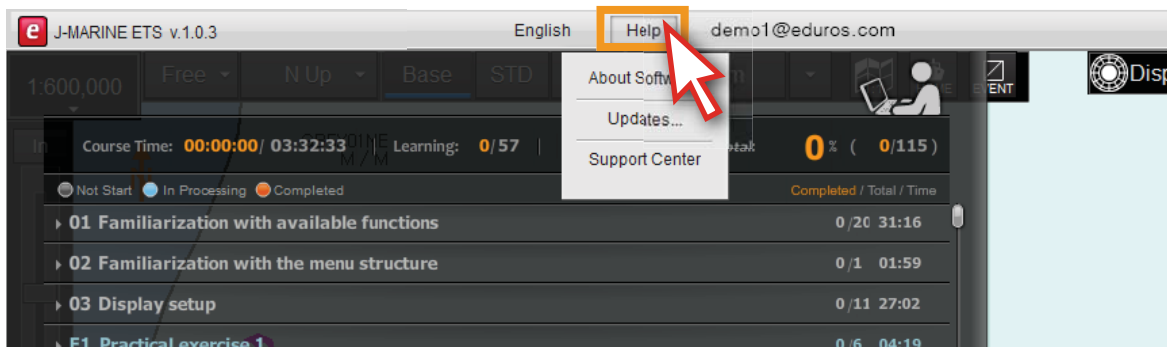
1) You can change the user language. - English, Japanese, Korean, Chinese <Figure 3-1>



<Figure 3-1>

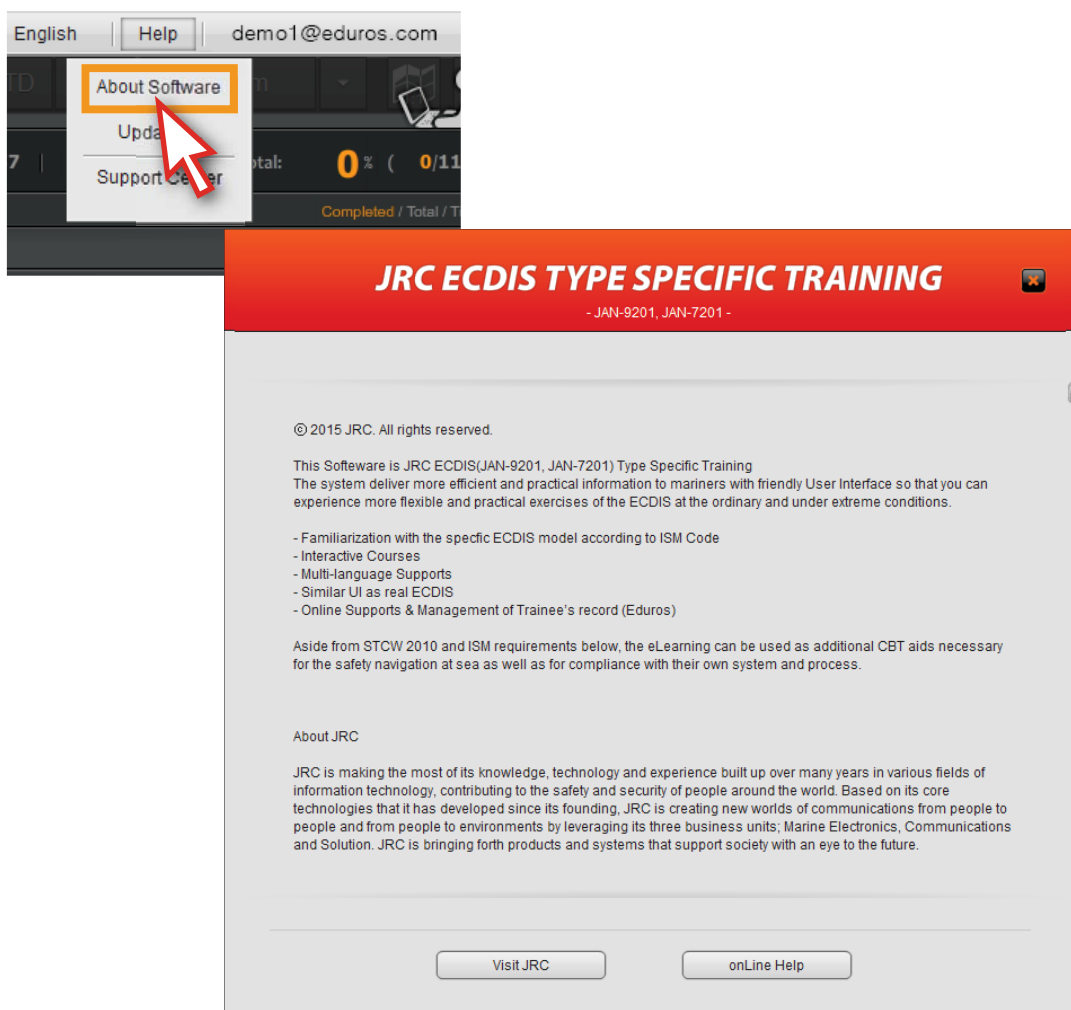
### 3. Screen and menu

2) When you click the 'help' button, drop-down lists ('About eduros', 'Updates...'and 'Support Center' etc.) will appear. <Figure 3-2>



<Figure 3-2>

3) 'About Software' in the help tab, you can get some brief summary about the software and JRC. <Figure 3-3>



<Figure 3-3>

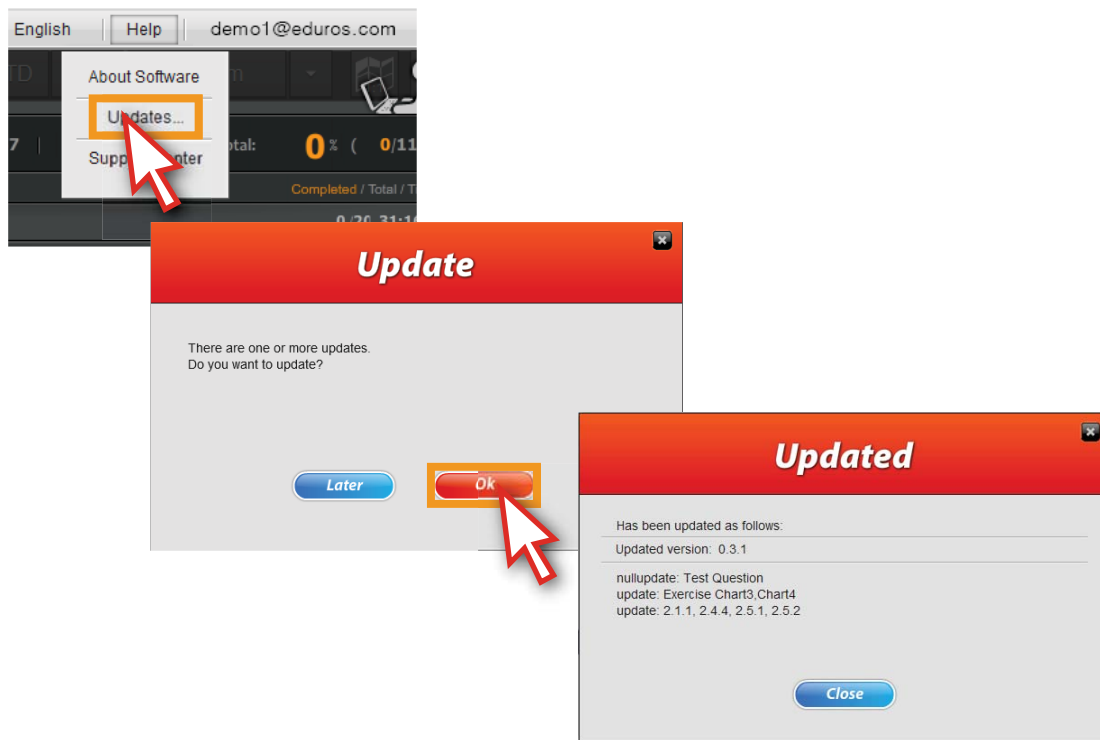
### 3. Screen and menu

4) 'Updates...' menu: If the program or contents are modified, the notice will pop up automatically when you log in.

If you want to update manually, you can use this menu. <Figure 3-4>

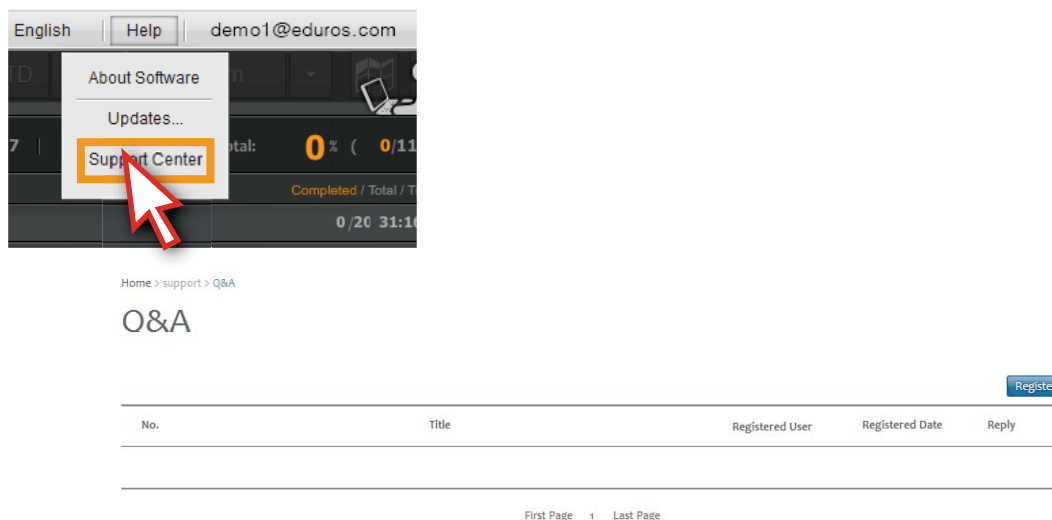
※ 'Updates...' button can only be available in the online mode.

Please refer to details on page 58.



<Figure 3-4>

5) 'Support Center' menu: It is a shortcut that you can go to the Q&A page on the official website of eduros. <Figure 3-5>



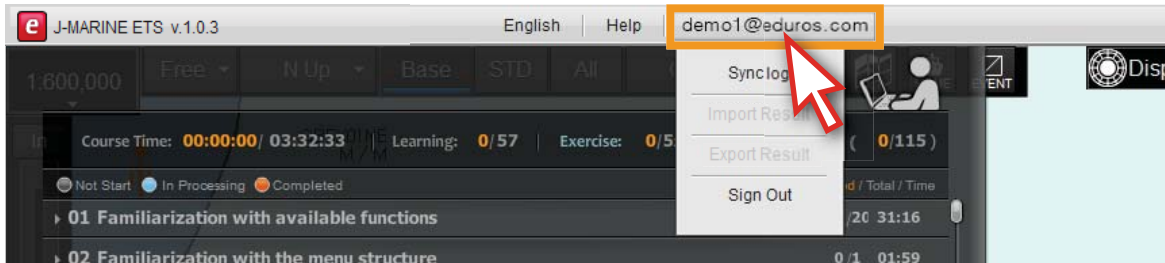
<Figure 3-5>

### 3. Screen and menu

6) User ID: When you click the user ID on the Main menu bar, 'Sync log' and 'Sign out' will appear in the drop down list.

※ The 'Import Result' and 'Export Result' button can only be available in offline mode.

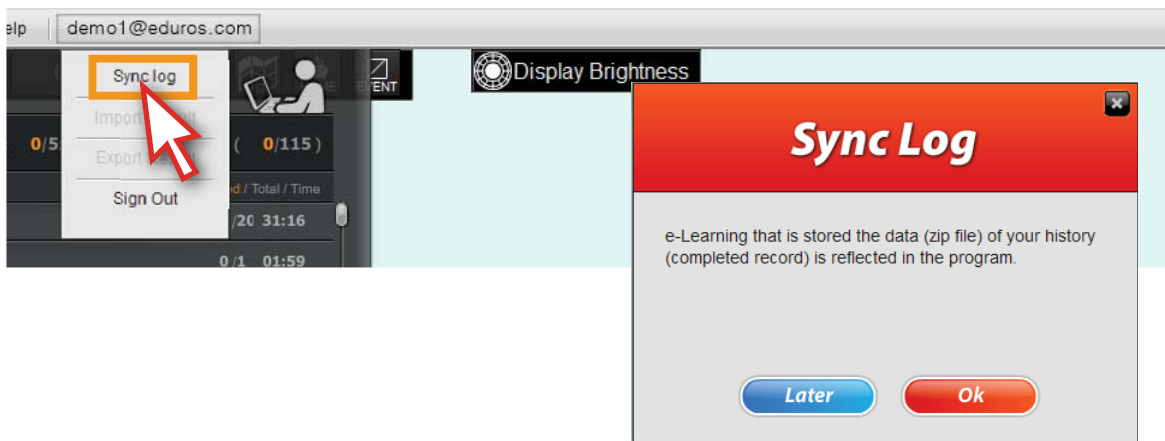
<Figure 3-6>



<Figure 3-6>

7) ※ Sync log: If you would like to continue your learning on another computer, you are able to synchronize the learning history from existing computer to a new computer.

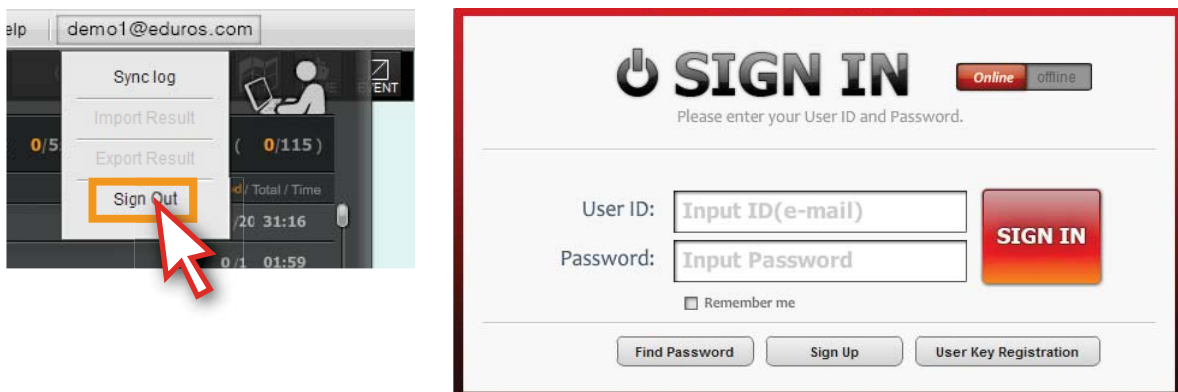
<Figure 3-7>



<Figure 3-7>

8) Sign out: When you click this button, you will log out from eduros. <Figure 3-8>

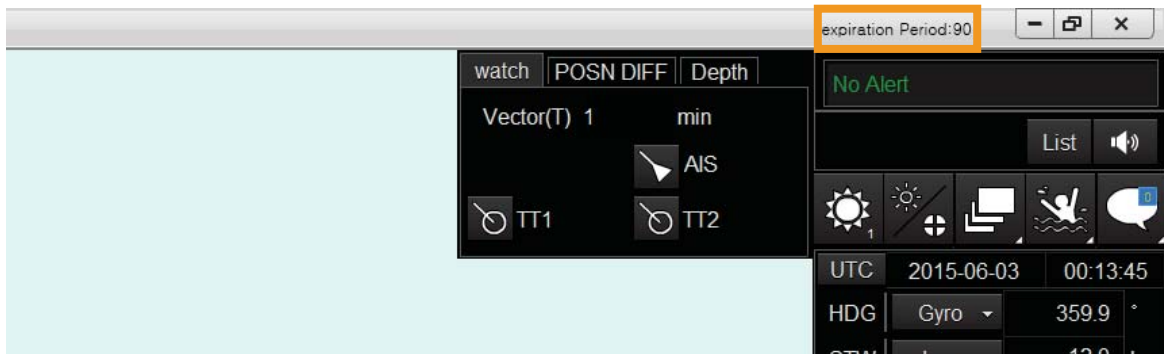
※ If you click 'Sign out' button to log out, the "Remember me" records will be removed.



<Figure 3-8>

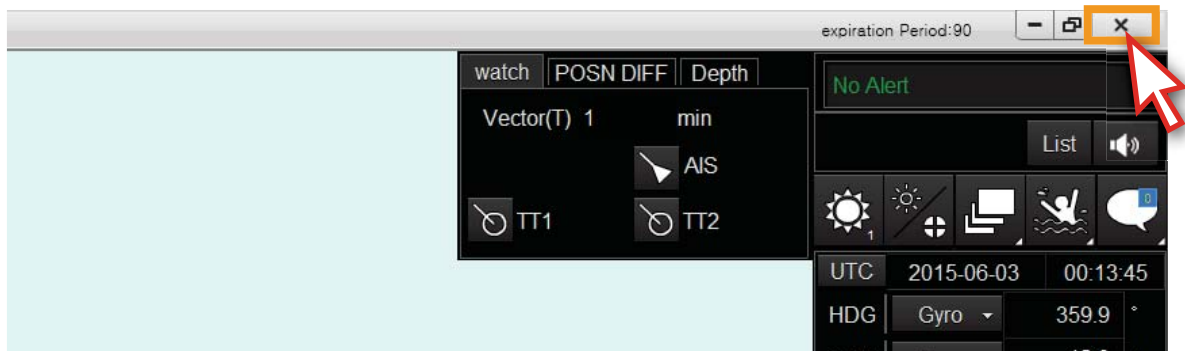
### 3. Screen and menu

9) Expiration Period: It shows the remaining valid days. <Figure 3-9>



<Figure 3-9>

10) If you click the ' X'button, the program will be closed. <Figure 3-10>

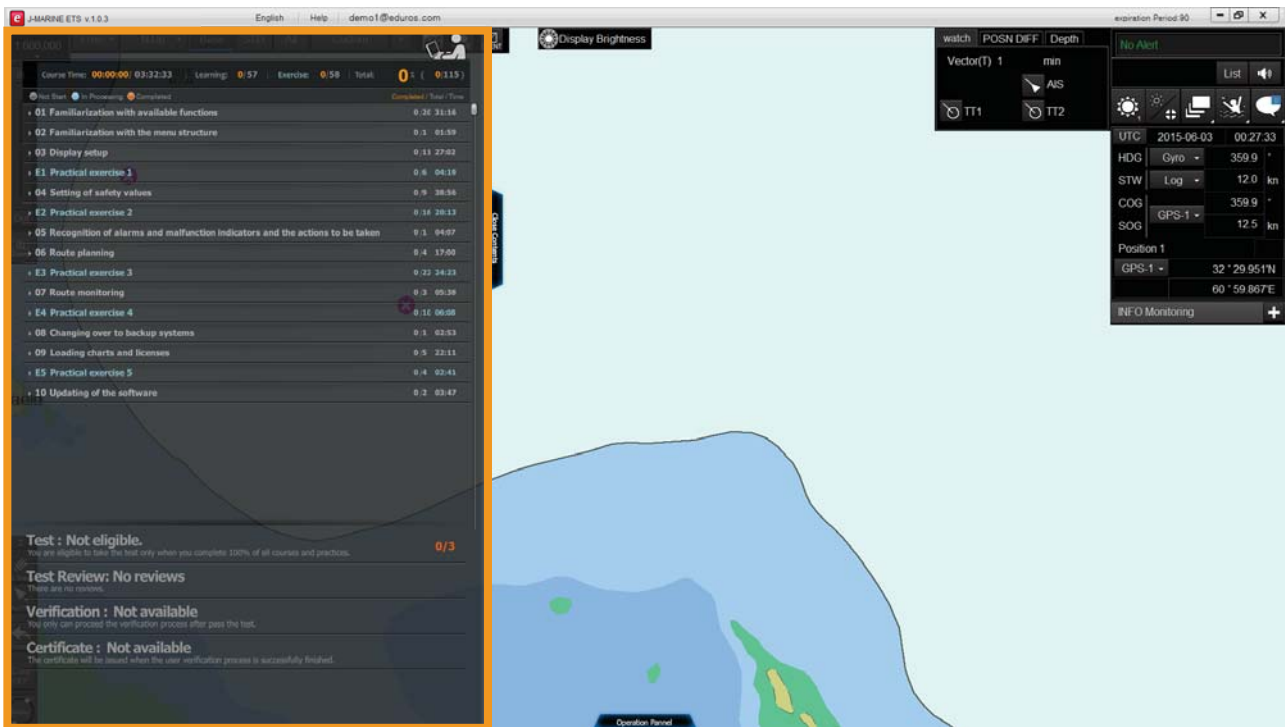


<Figure 3-10>

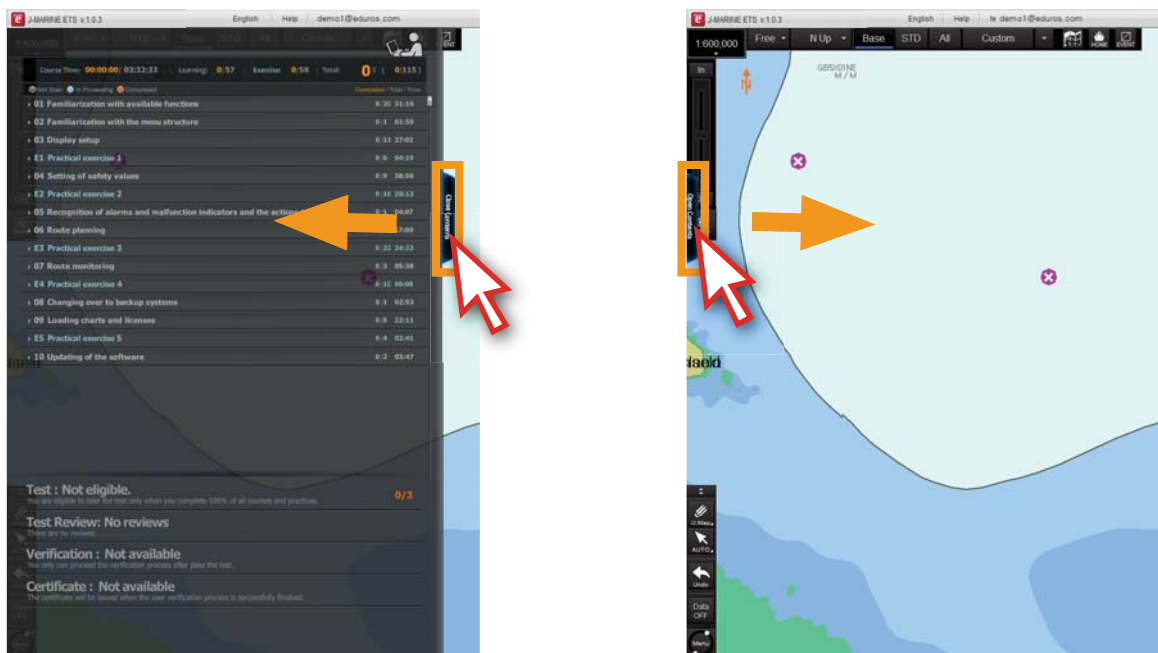


# 3. Screen and menu

## 3. Course menu description



11) Close and open the course menu with clicking the 'Close Contents' and 'Open Contents' button. <Figure 3-11>

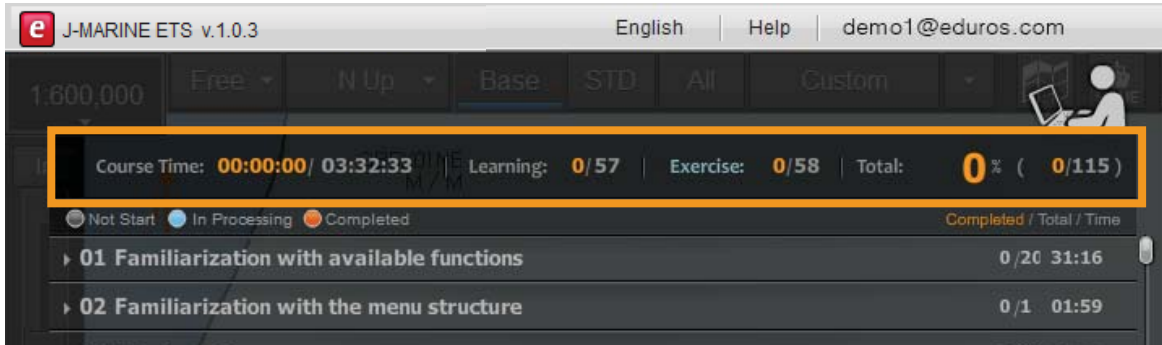


<Figure 3-11>

### 3. Screen and menu

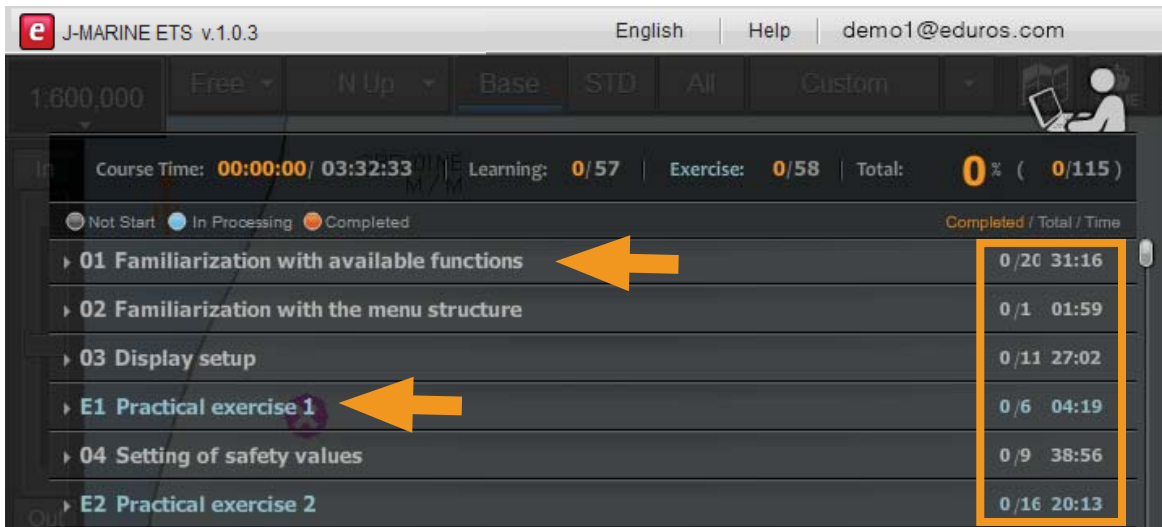
12) The user's learning status will be shown in the box. <Figure 3-12>

Course Time : Elapsed time / Total time    Learning : 0/57 (Completed courses / Total courses)  
Exercise : 0/58 (Completed exercises / Total exercises)  
Total : 0% 0/115 (Rate of process completed courses / Total courses)



<Figure 3-12>

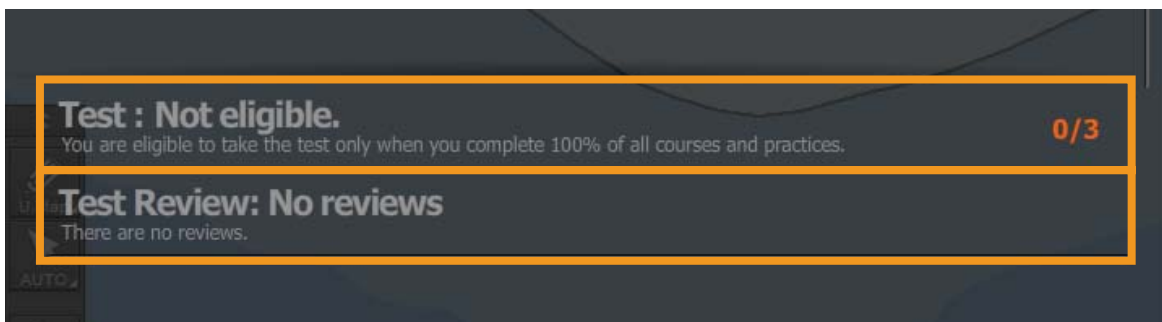
13) The letters in white are learning contents and in blue are exercise contents. Right part shows the number of contents and time. <Figure 3-13>



<Figure 3-13>

14) You can take the test after complete all of the courses.

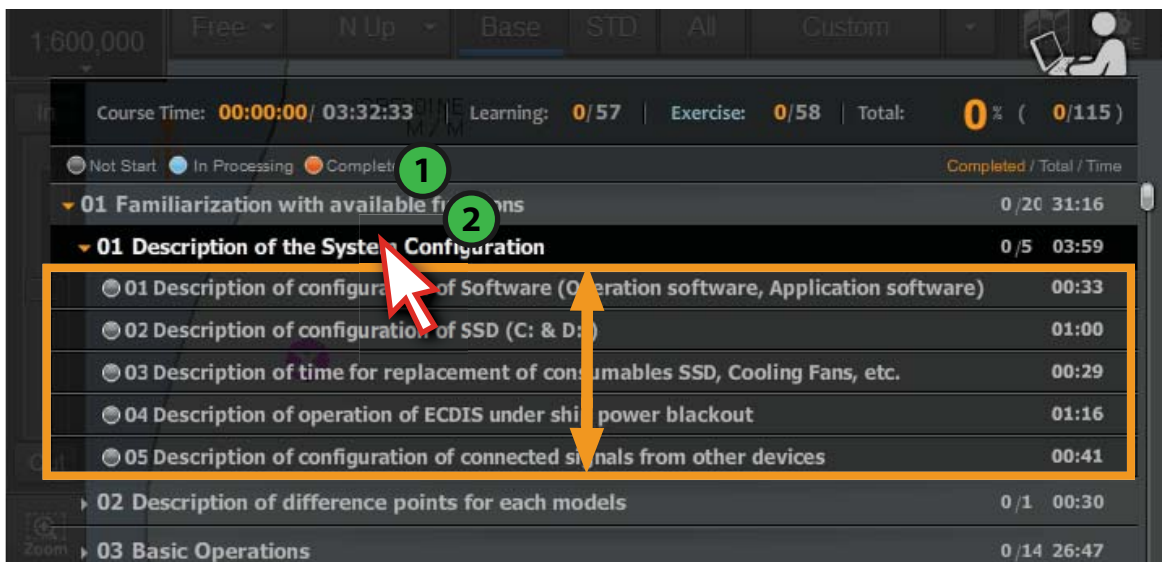
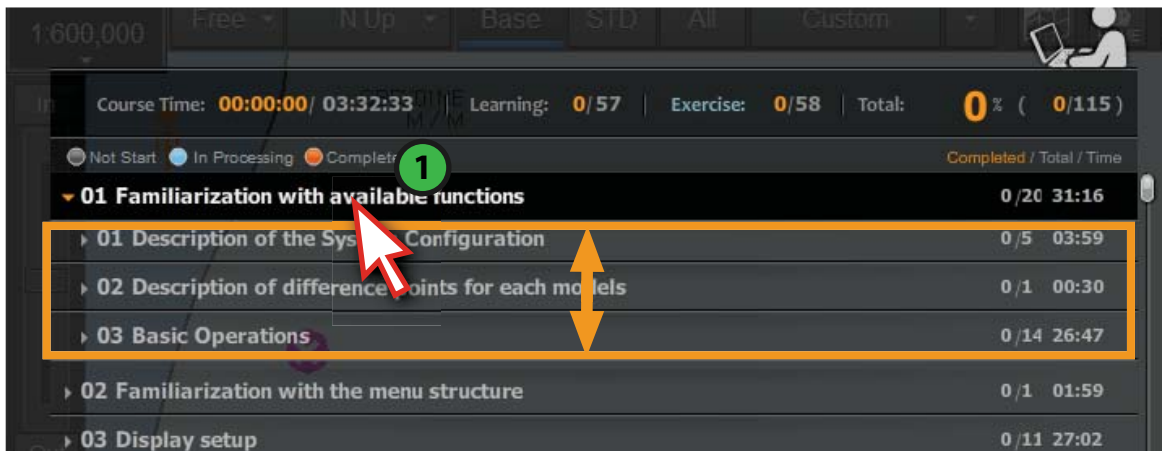
Test Review. Check the explanation about the questions after the test. <Figure 3-14>



<Figure 3-14>

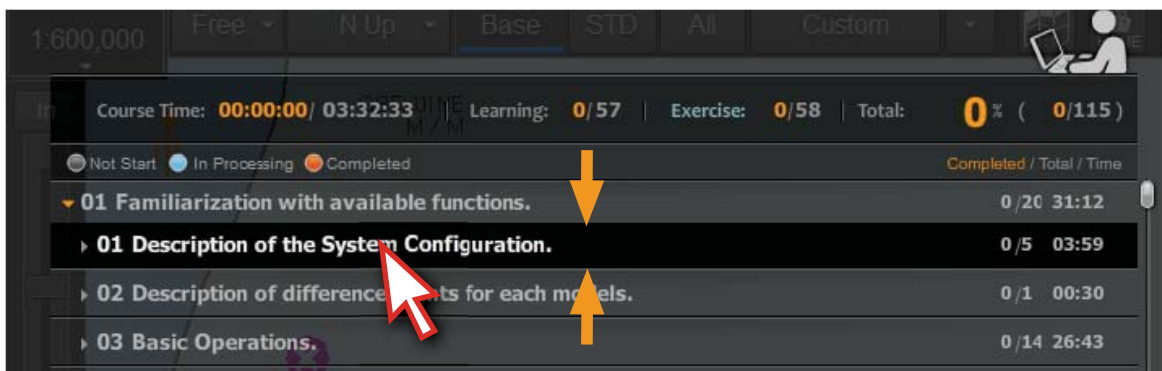
### 3. Screen and menu

15) You can select each 'title' on the course list and the sub-title list will be spreaded when you click each title. <Figure 3-15>



<Figure 3-15>

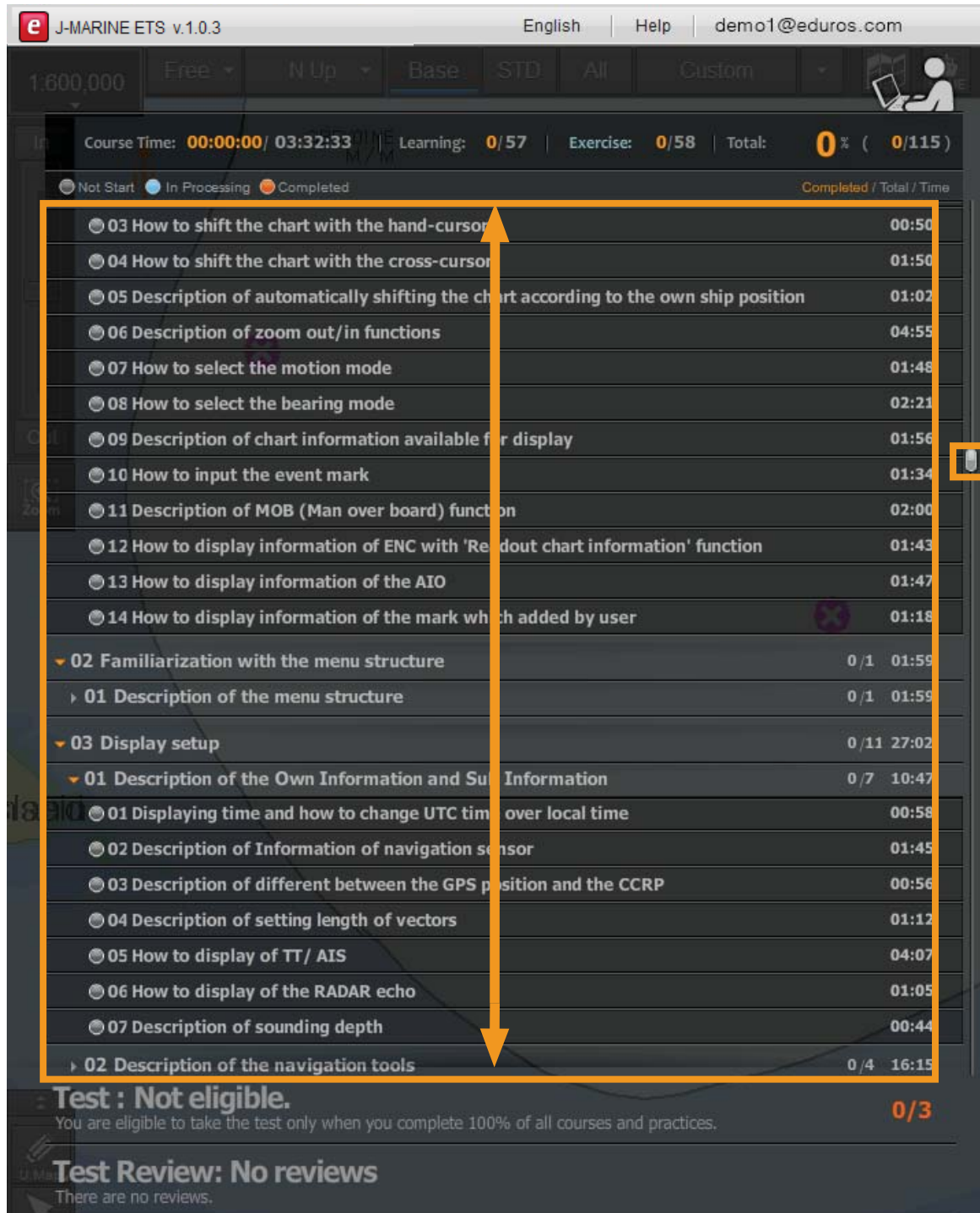
16) If you click the 'title' again, the sub-title list will be hidden. <Figure 3-16>



<Figure 3-16>

### 3. Screen and menu

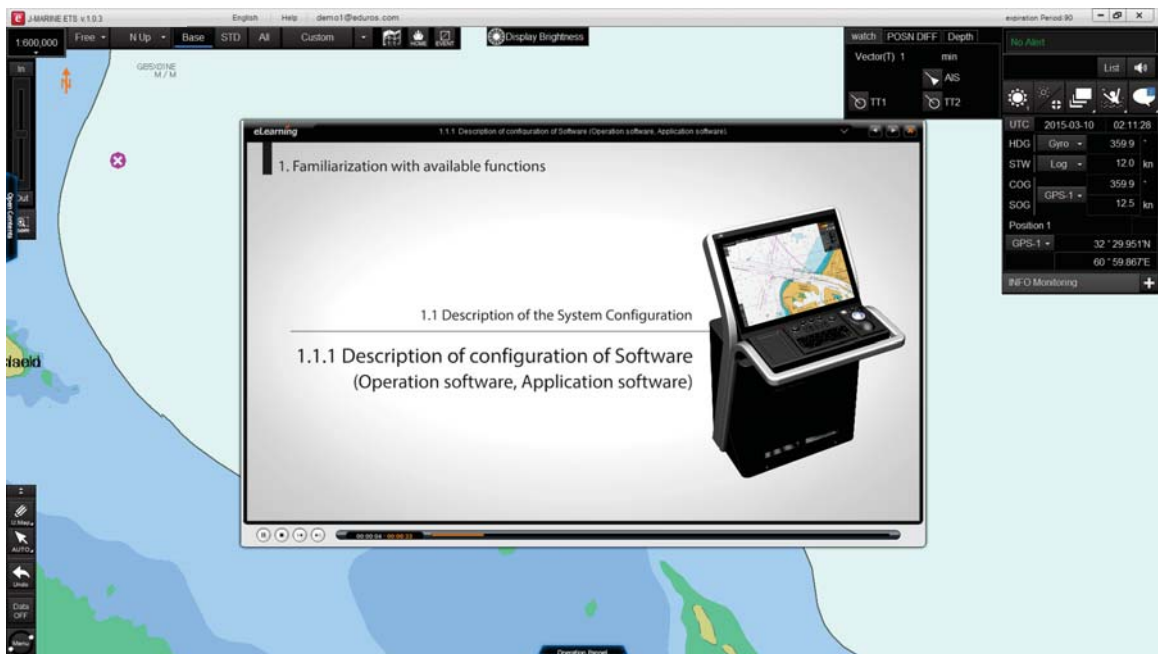
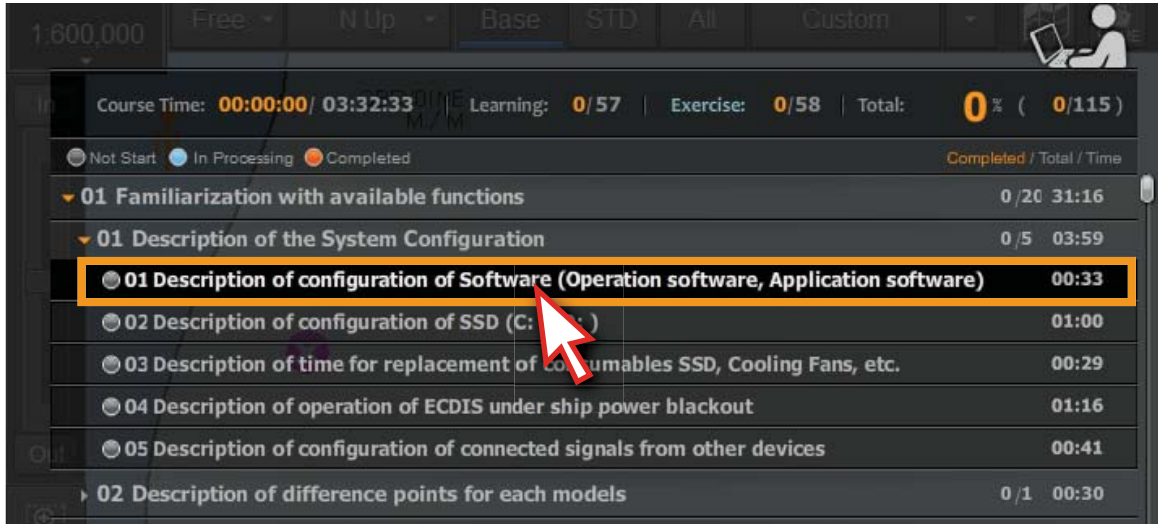
17) If you want to find out some specific course when a number of courses are displayed simultaneously, you can utilize the scroll function on the right side of screen. <Figure 3-17>



<Figure 3-17>

### 3. Screen and menu

18) Click the titles to start learning the courses. <Figure 3-18>

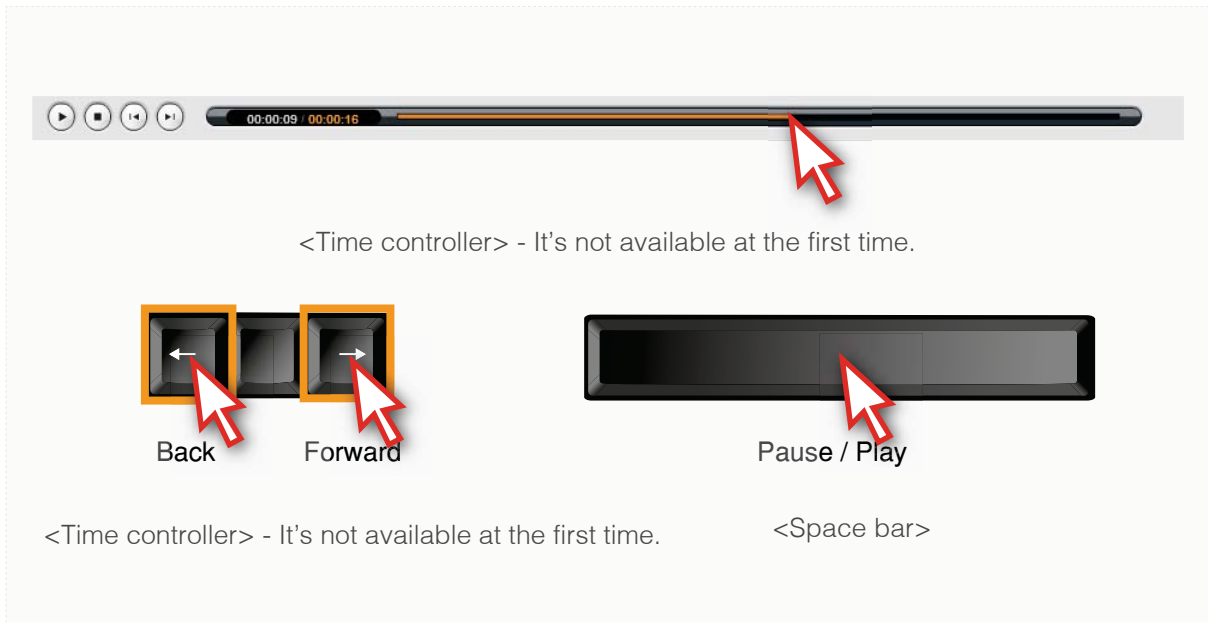


<Figure 3-18>



### 3. Screen and menu

19) The animation can be controlled to back and forth by using the 'Arrow keys' and 'space bar' on the video player. <Figure 3-19>



<Figure 3-19>

20) Click the 'X' button to close the video when you finished watching the animation. <Figure 3-20>



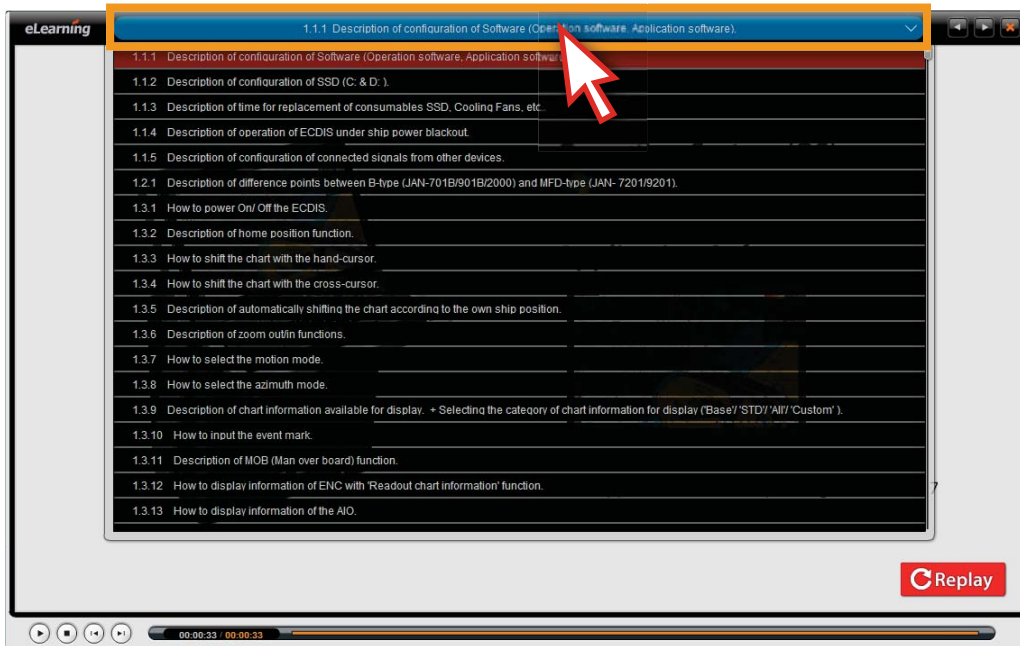
<Figure 3-20>

### 3. Screen and menu



How to select the other courses in the video player.

1. Click the title in the animation showing box, you can select the other courses from the popup list. (As shown below)

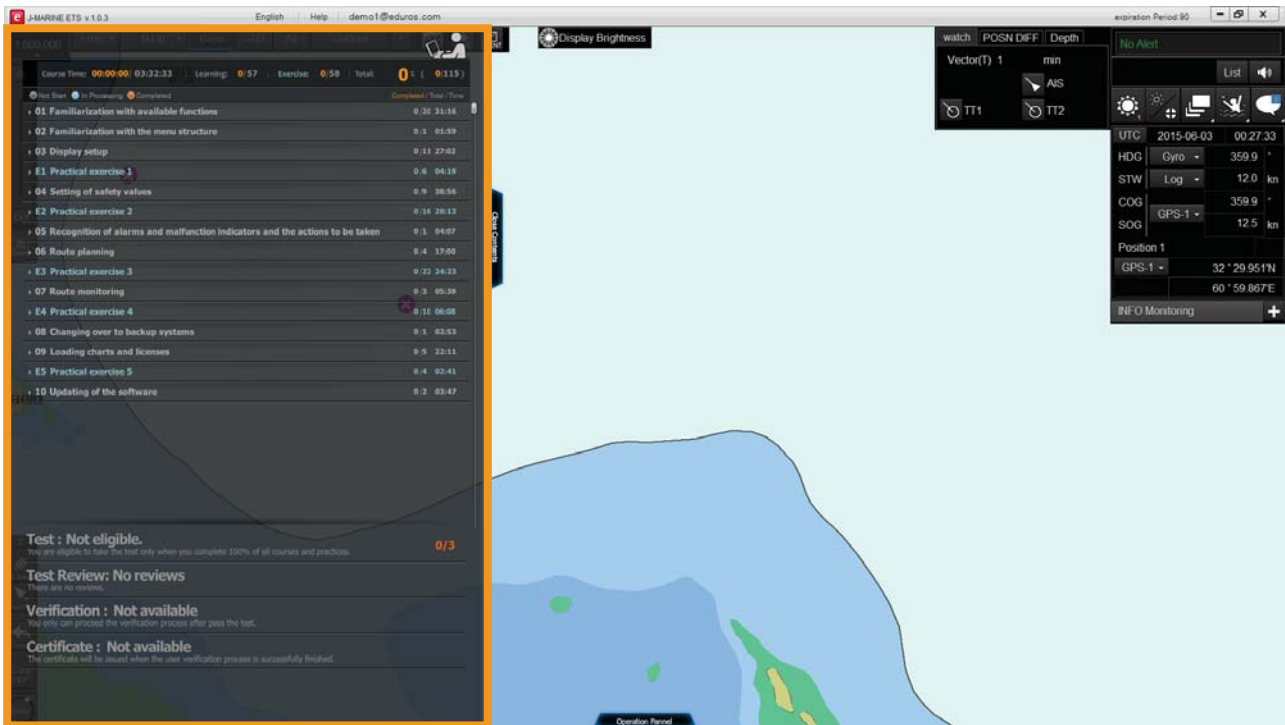


2. You can go to previous or next course with clicking the buttons. (As shown below)

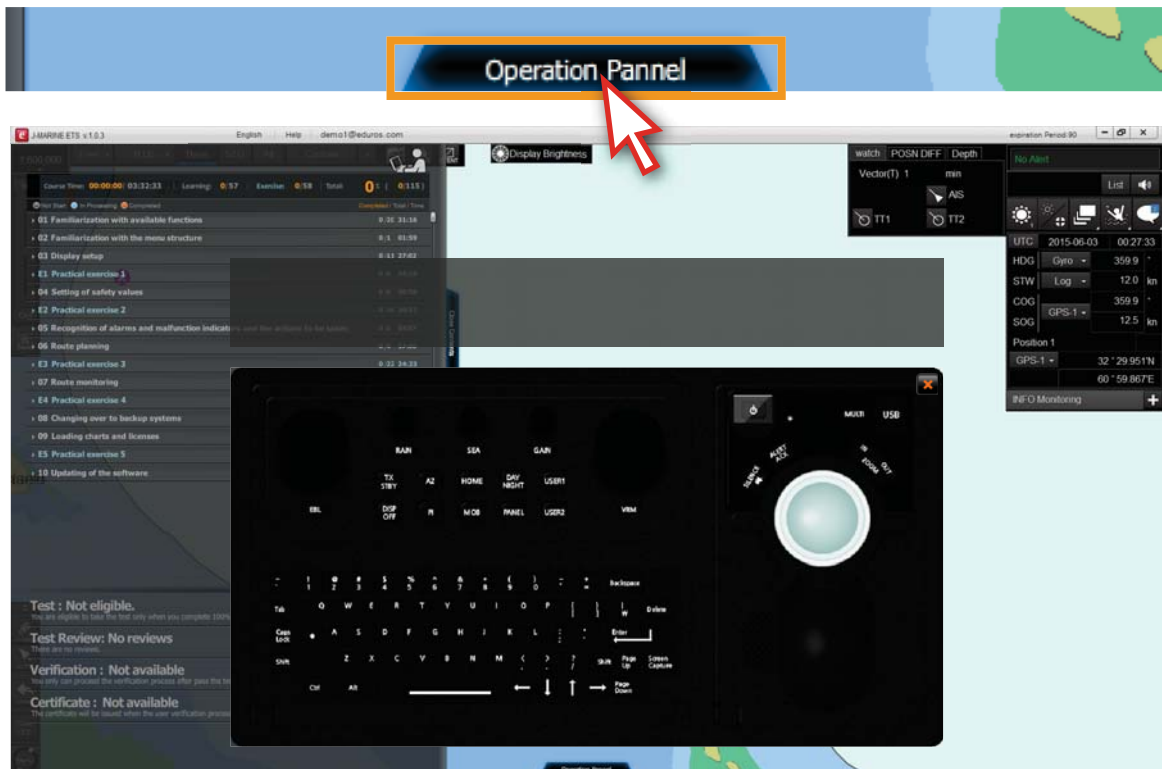


### 3. Screen and menu

#### 4. Operation panel description



21) Click the 'Operation Panel' button, then the operation panel will appear. <Figure 3-21>

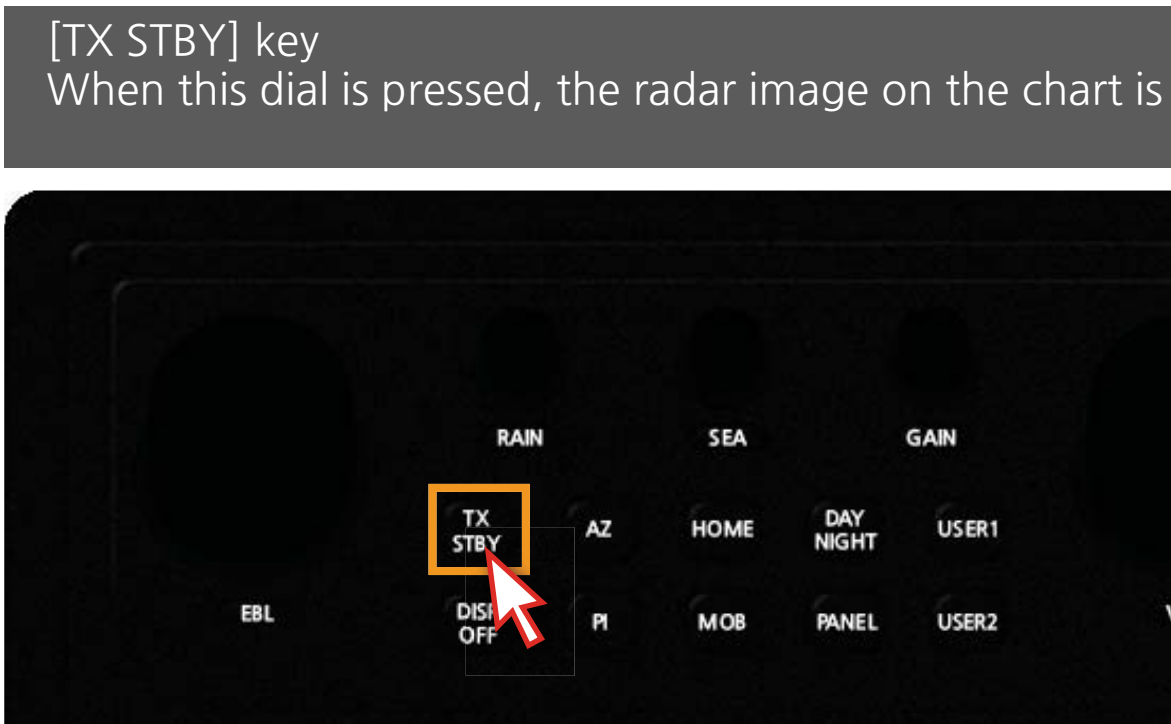


<Figure 3-21>



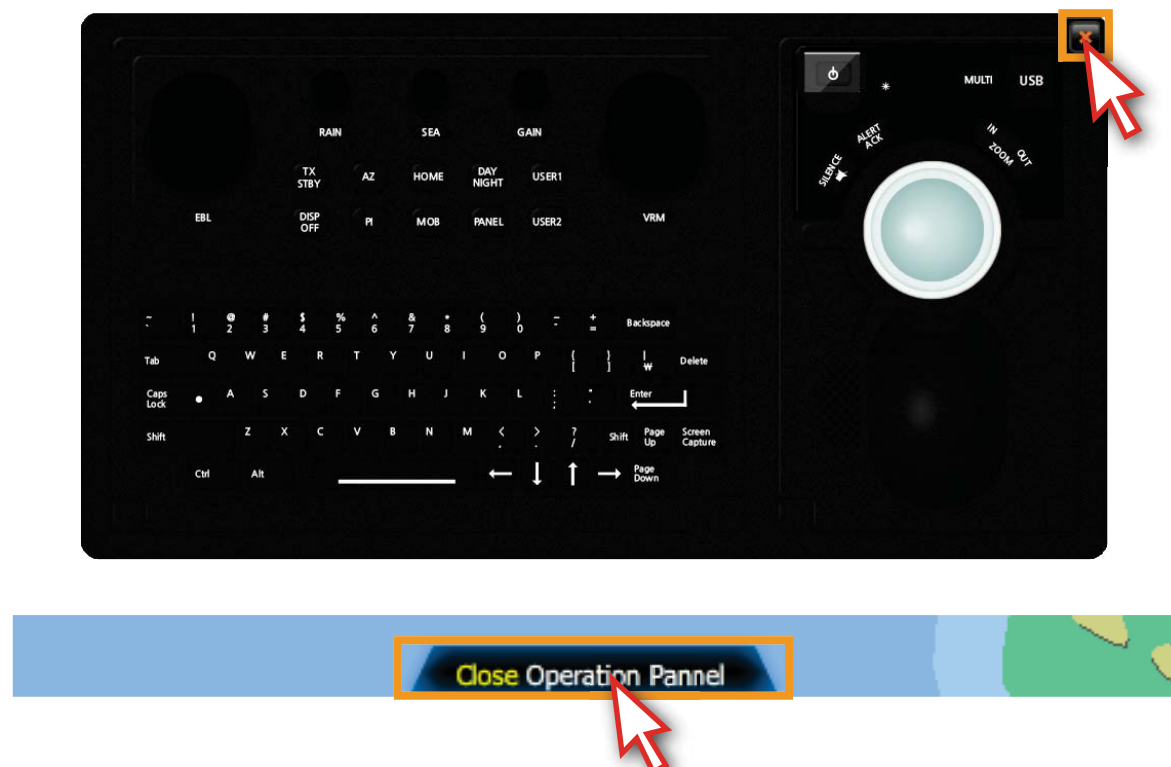
### 3. Screen and menu

22) You can see the detailed information of each button when the cursor moves on each button of the operation panel. <Figure 3-22>



<Figure 3-22>

23) Click 'X' or 'Close Operation Panel' to hide the operation panel. <Figure 3-23>



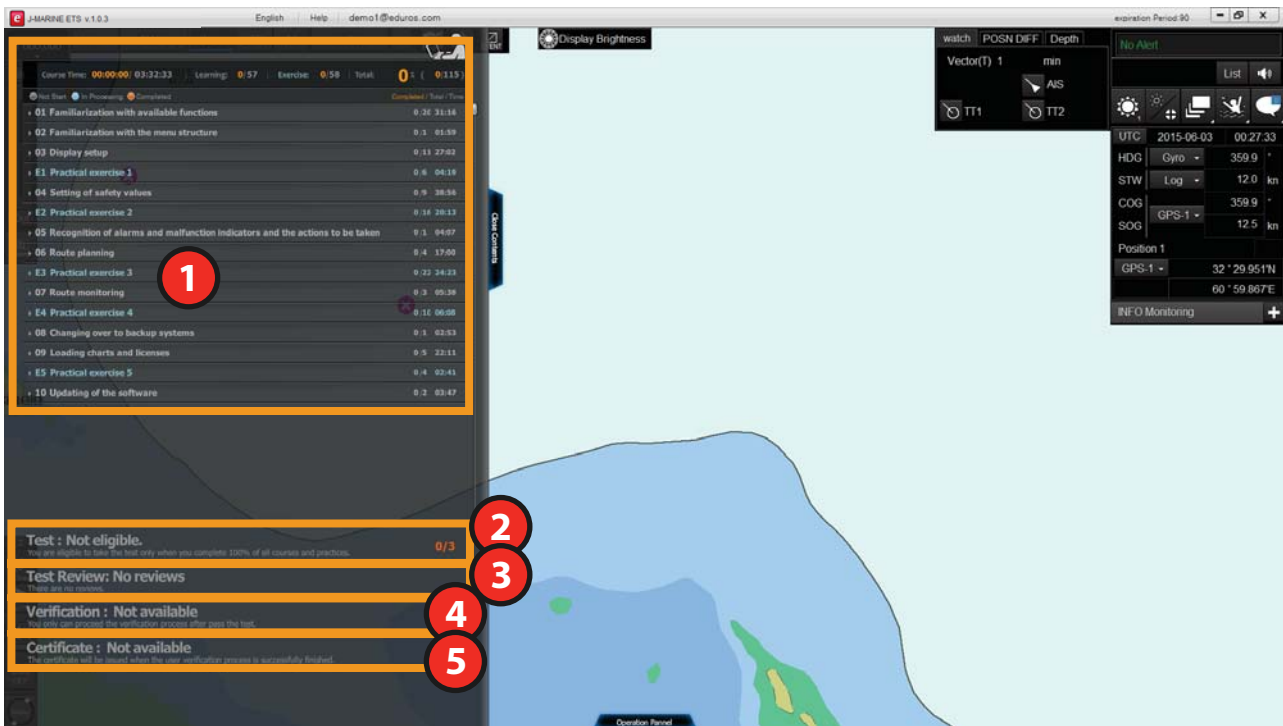
<Figure 3-23>

# 4. Learning

1. Learning overview
2. Learning course
3. Exercise course - Step by step
4. Exercise course - Practice by oneself
5. Penalty of Practice by oneself

# 4. Learning

## 1. Learning overview



- 1 There are 115 courses altogether. It is a place where you can find all courses at a glance. The sub-title list will appear when you click each title.
- 2 Test part. It can be available only after you complete all of the courses.
- 3 Use it to save the learning history.
- 4 Verification part. It can be available in user verification section.
- 5 Certification part. It can be available in certificate issuing section.

- 115 courses in total.

Contents Part (This part consists of 57 animation courses containing 10 nautical charts.)

Exercise Part (This part consists of 58 practice courses containing 4 nautical charts.)

- Support multiple languages in English, Japanese, Korean.

- Well-organized learning.

- Timely checking of learning status.

- Possible to review the contents on your own without any limitations.

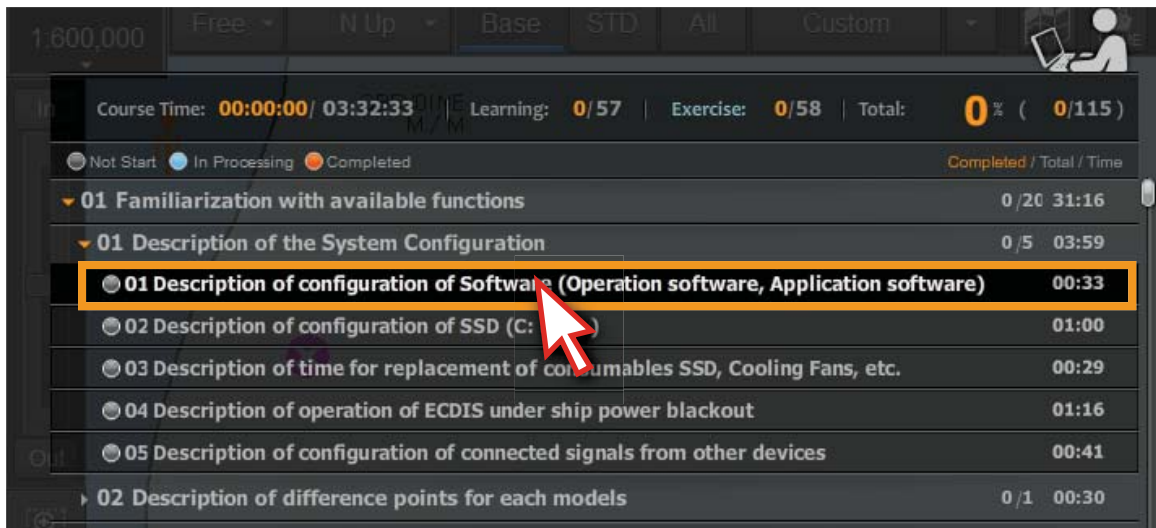
- Test qualification will be given once you complete all of the courses.

- Learning records is saved automatically.

## 4. Learning

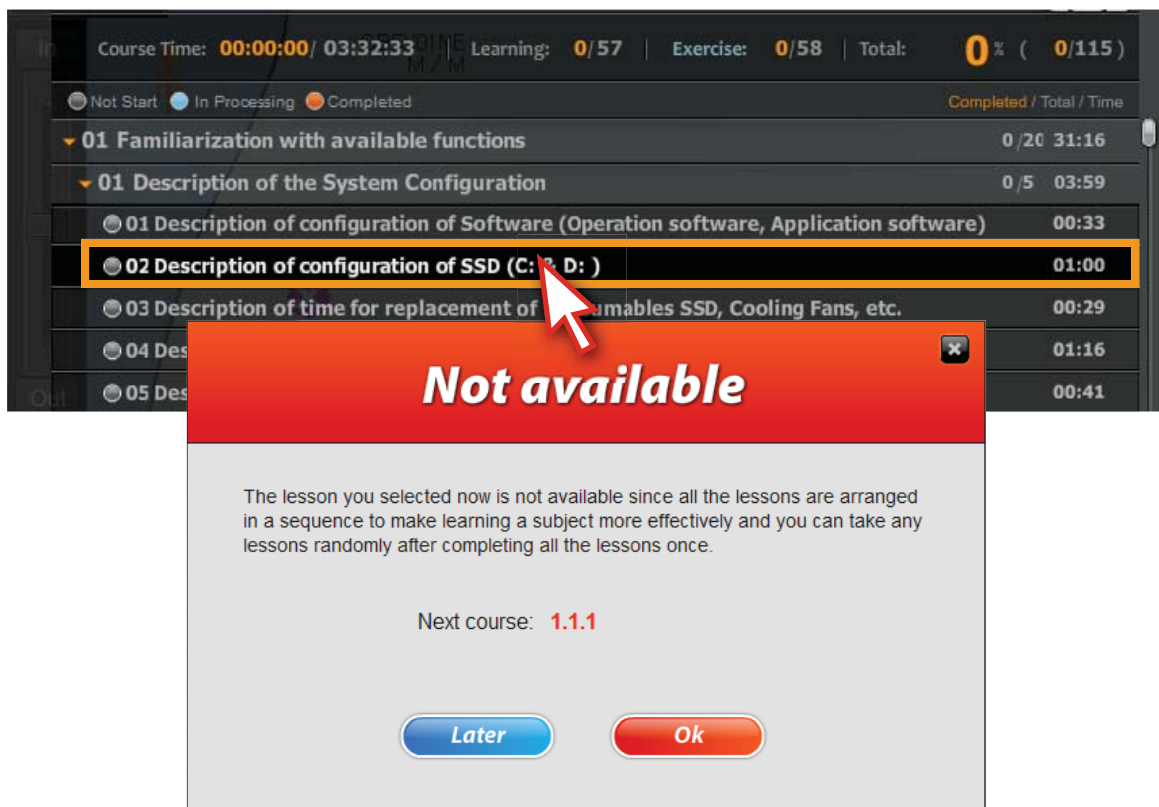
### 2. Learning course

1) You should take the course step by step. <Figure 4-1>



<Figure 4-1>

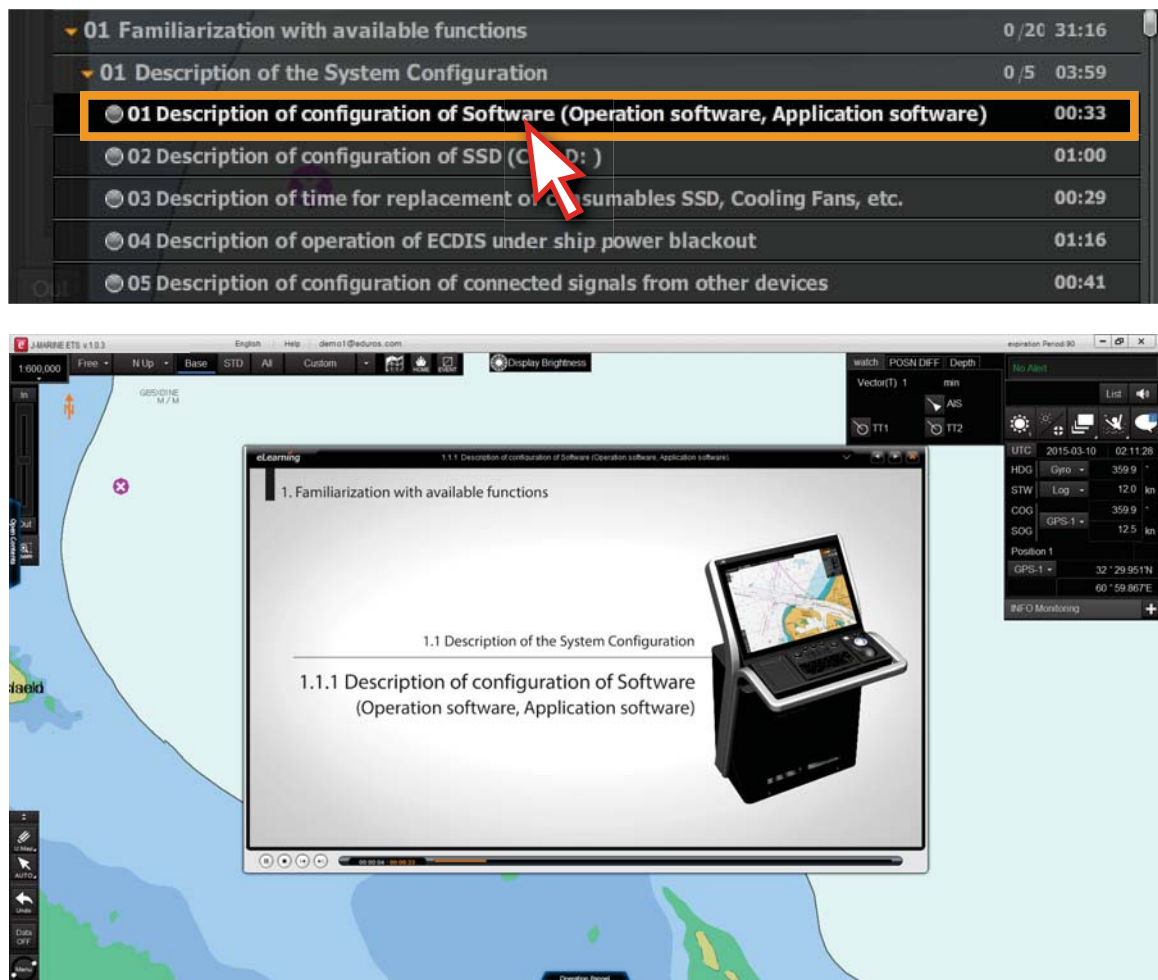
2) If you select the course randomly, the reminding pop-up window will appear. <Figure 4-2>



<Figure 4-2>

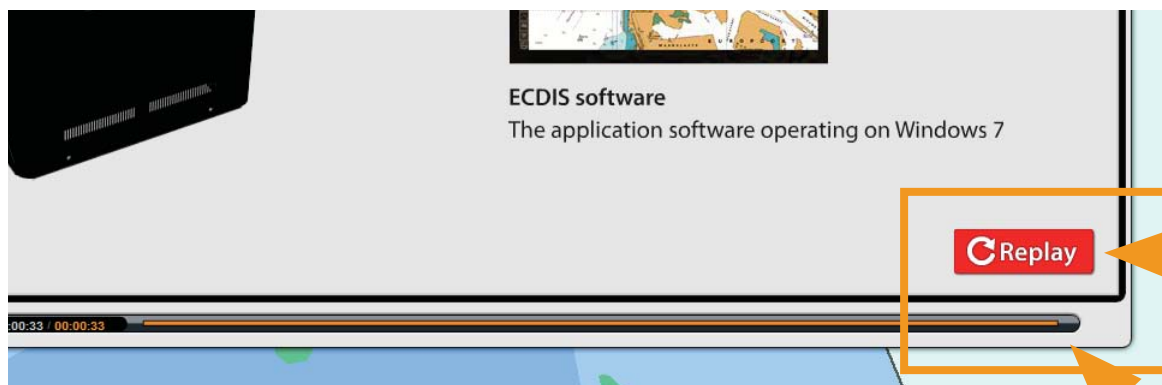
## 4. Learning

3) Click the first course, start to learn. Then the animation video plays. <Figure 4-3>



<Figure 4-3>

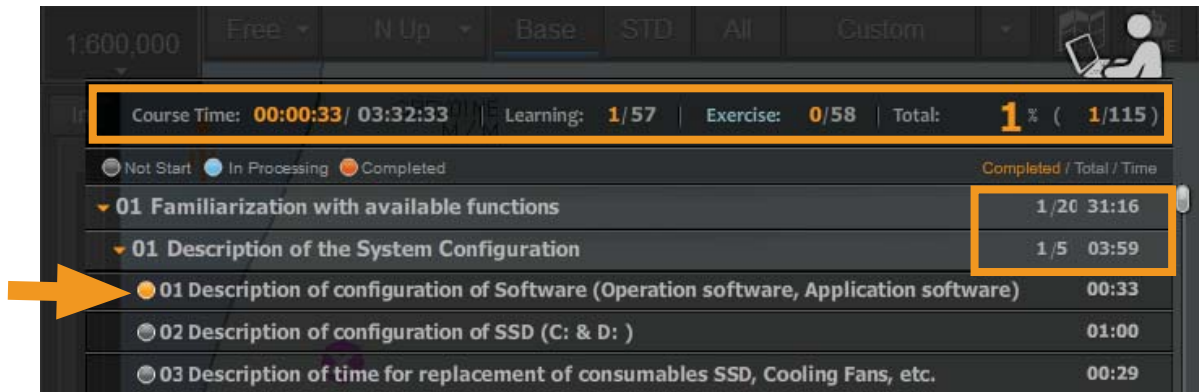
4) The replay button will appear at the end of the video, it indicates this unit has finished. <Figure 4-4>



<Figure 4-4>

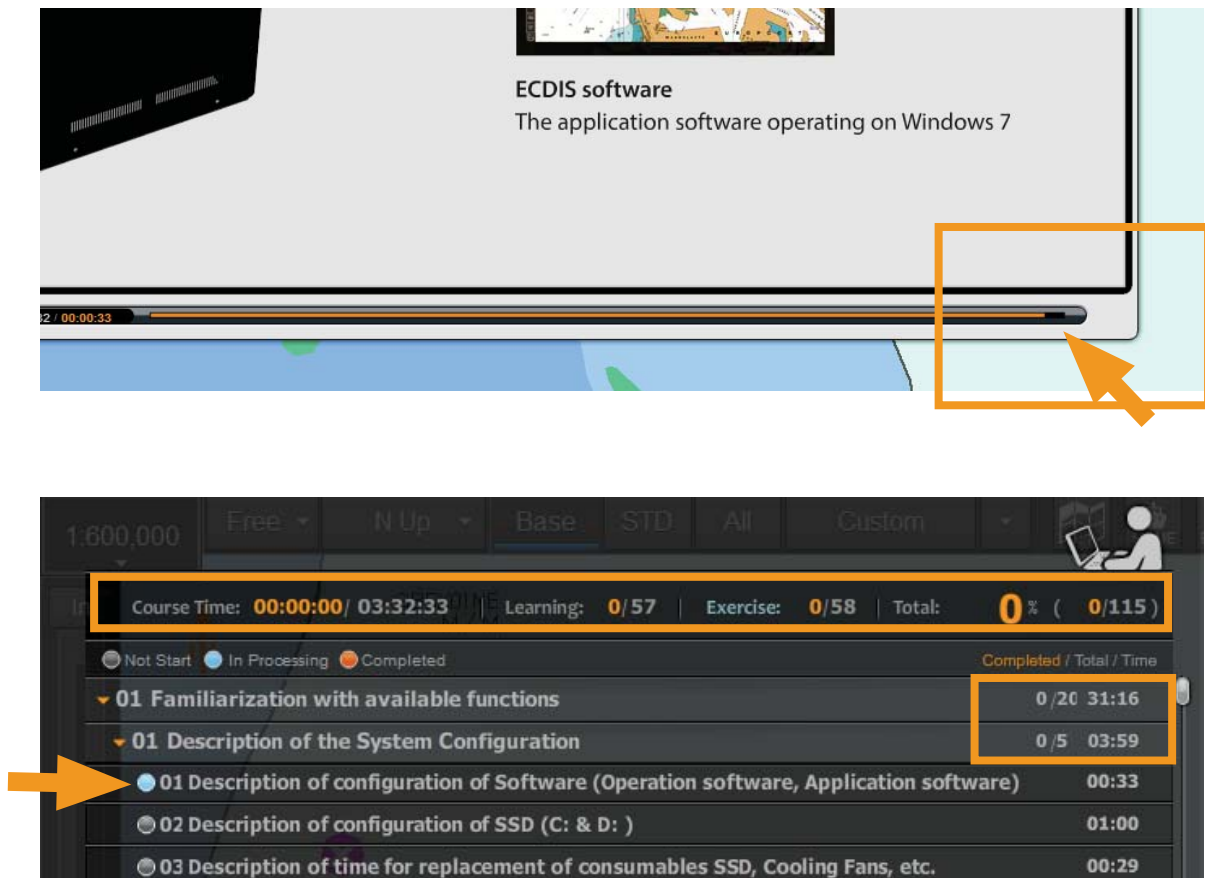
## 4. Learning

5) The icon will become into orange when you complete the unit. The learning history will be recorded also. <Figure 4-5>



<Figure 4-5>

6) If the course hasn't finished, the icon will become into blue and the learning history won't be recorded, either. <Figure 4-6>



<Figure 4-6>



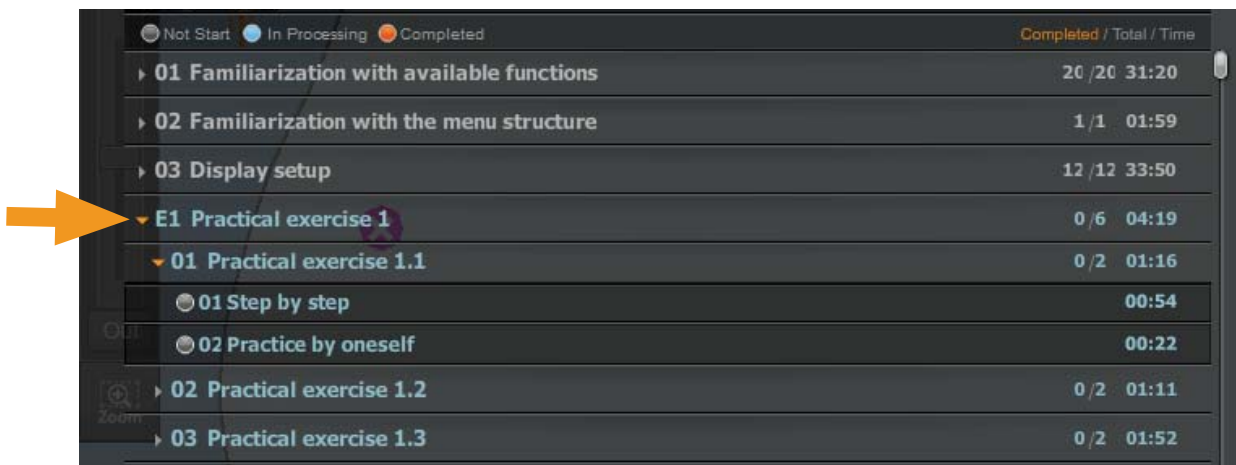
## 3. Exercise course - Step by step

7) The titles of exercise part are in blue. The drop-down list will appear when you click the exercise title.

It consists of 'Step by step' and 'Practice by oneself' courses.

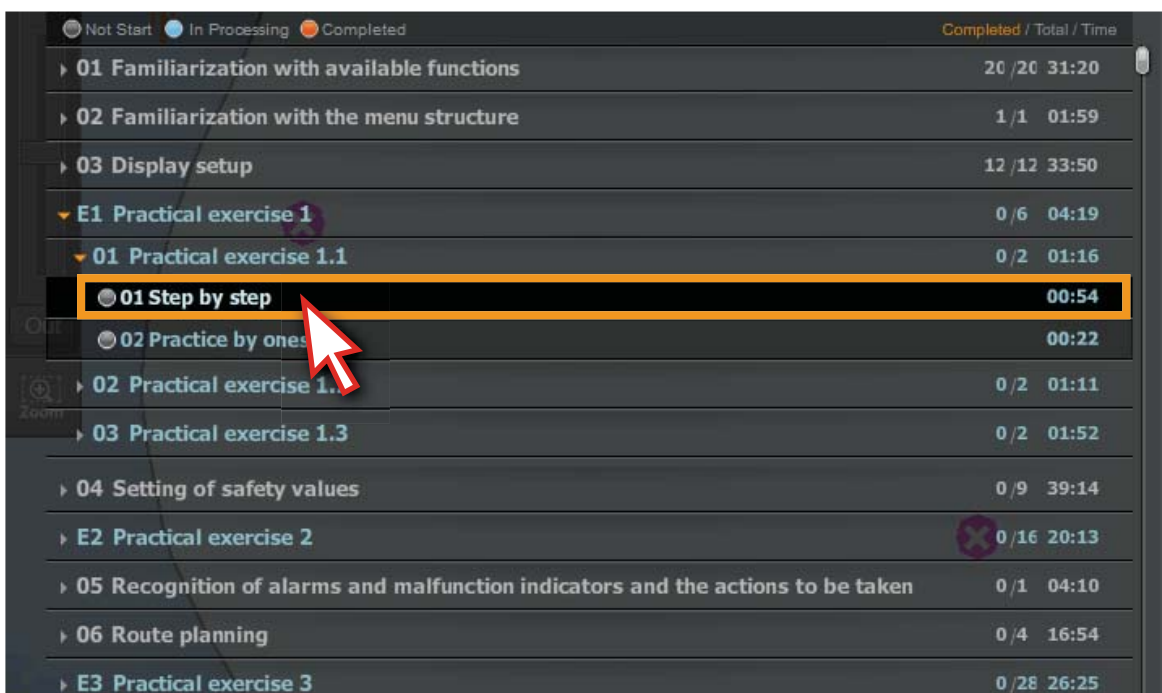
Step by Step is a learning method that you can learn the course orderly as instruction.

Practice by oneself is a learning method that you can learn the course step by step as instruction firstly, then study for yourself by practice. <Figure 4-7>



<Figure 4-7>

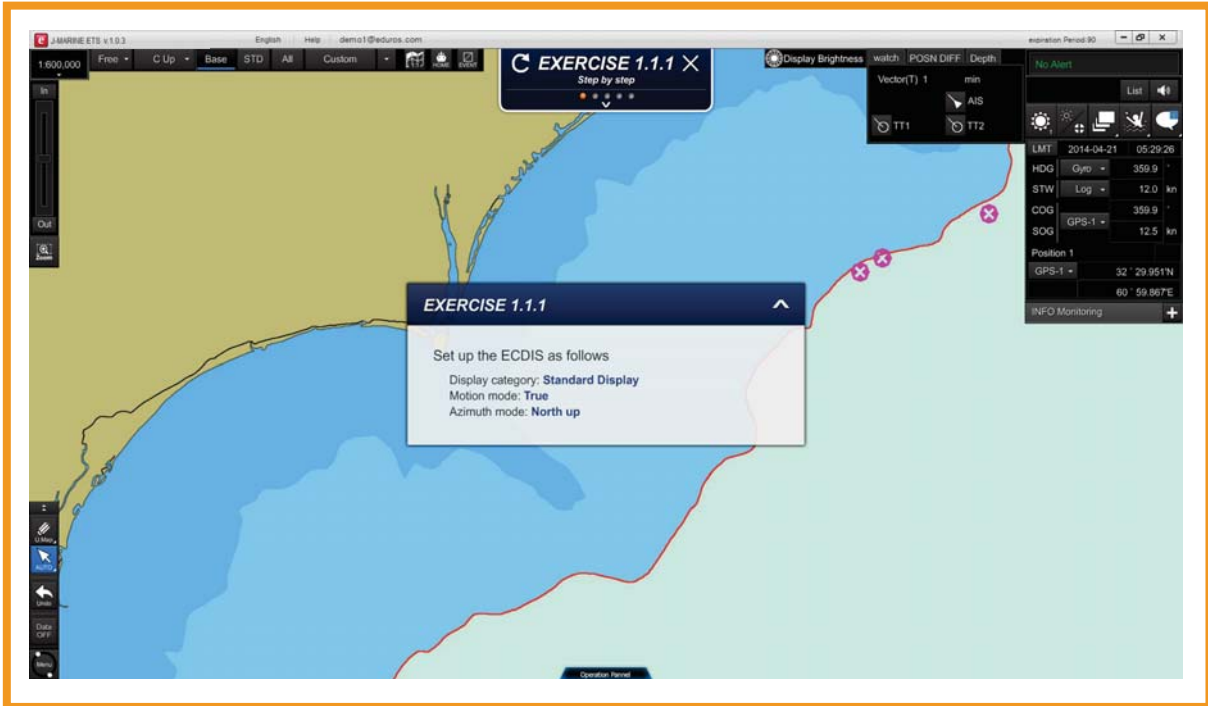
8) Click the 'Step by step'. <Figure 4-8>



<Figure 4-8>

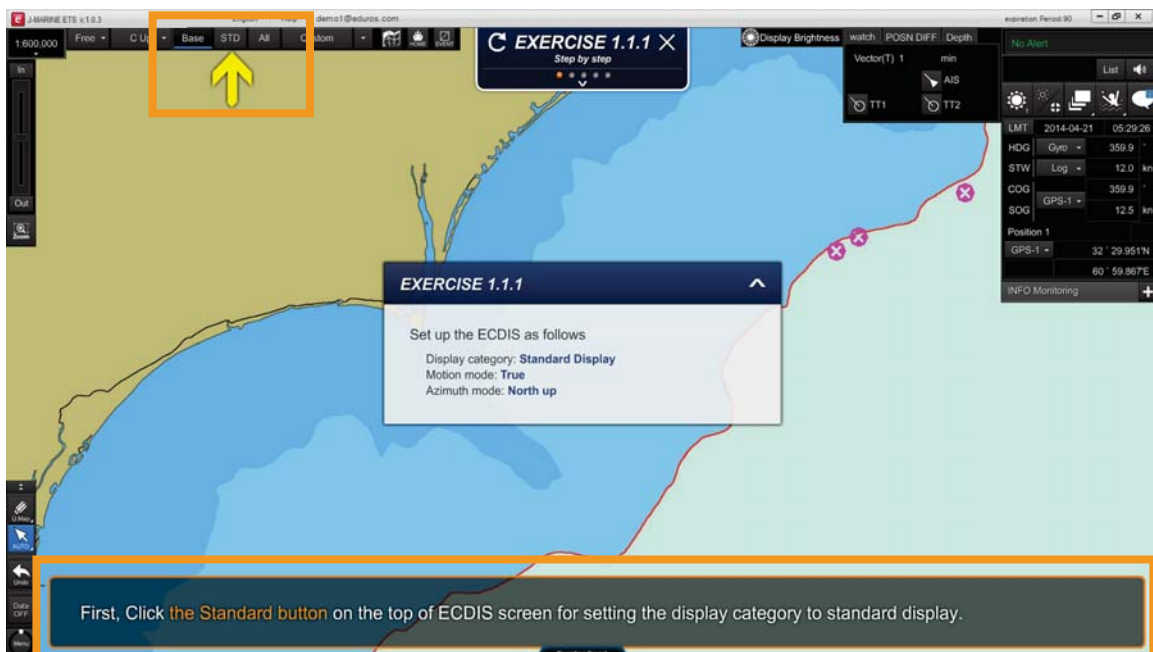
## 4. Learning

9) A new window will appear, full of the screen. <Figure 4-9>



<Figure 4-9>

10) Click the buttons as arrow pointing and take exercise orderly as instruction.  
<Figure 4-10>

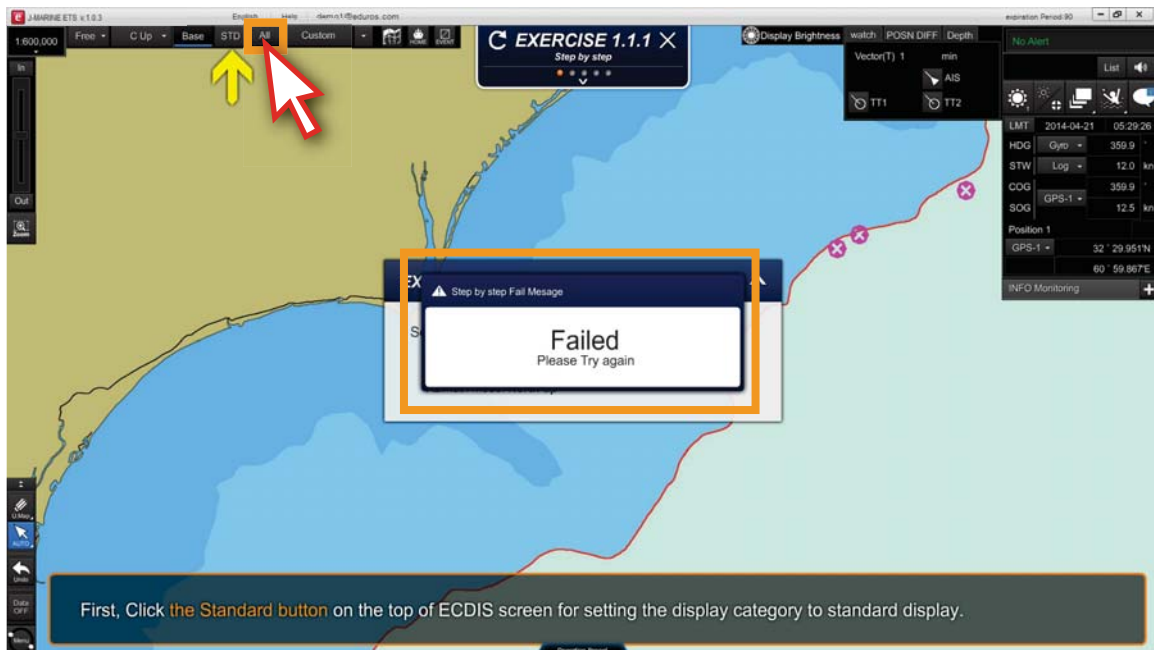


<Figure 4-10>



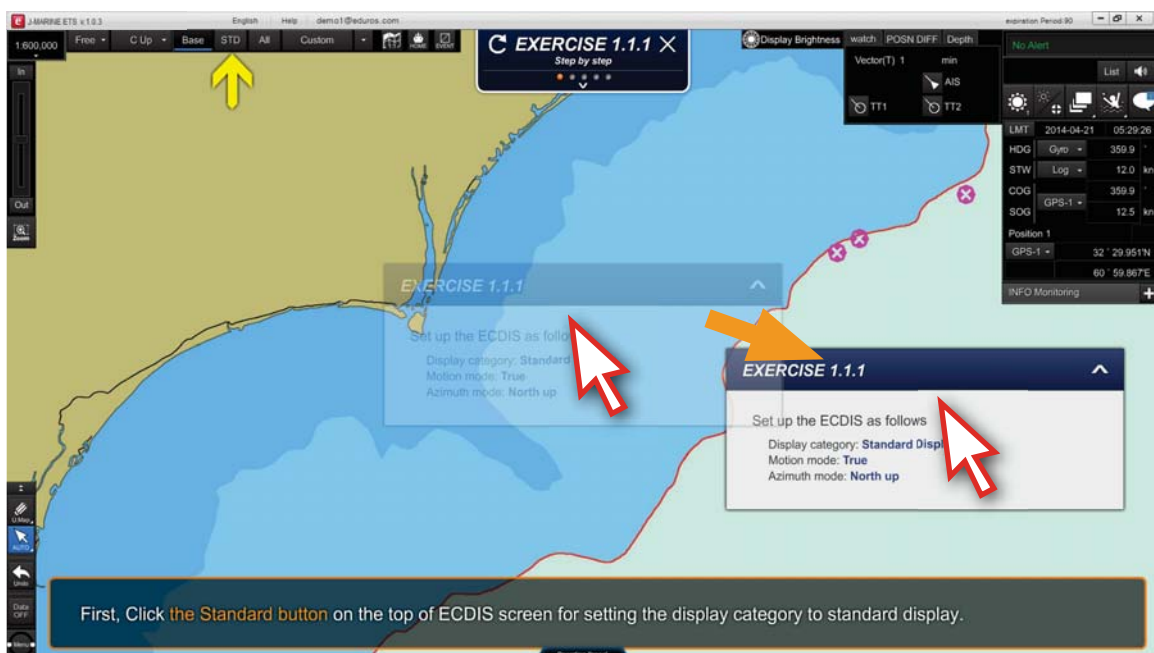
## 4. Learning

11) If you didn't click as instruction, the 'Failed' message will pop up. <Figure 4-11>



<Figure 4-11>

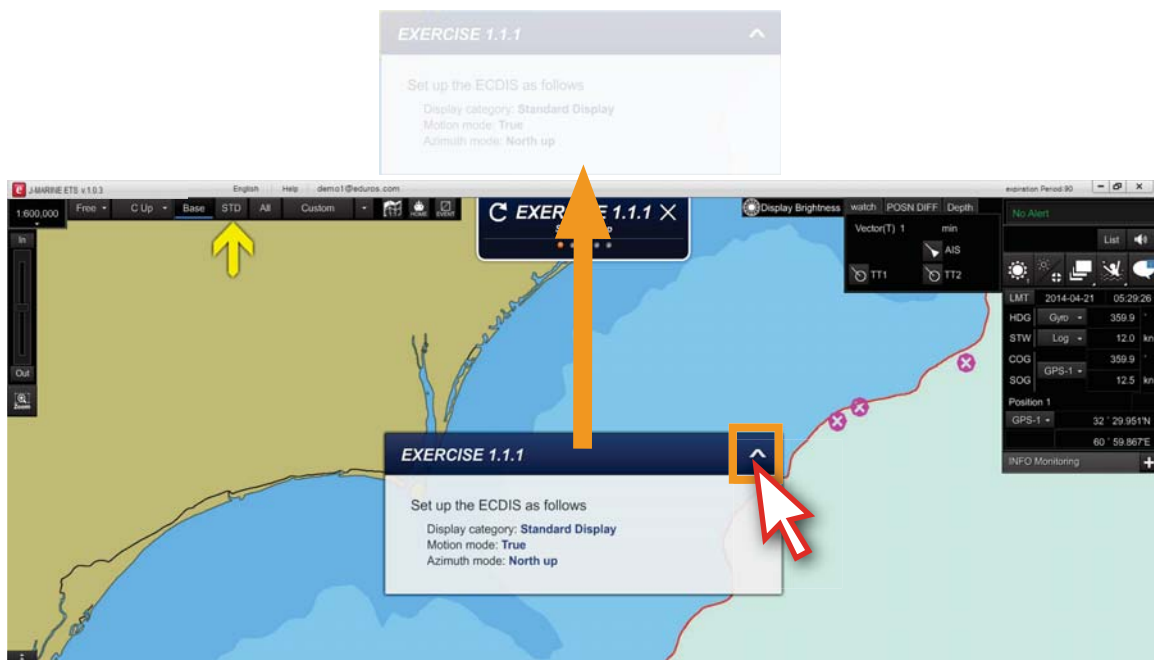
12) You can drag, move and hide the question pop-up window by mouse. <Figure 4-12>



<Figure 4-12>

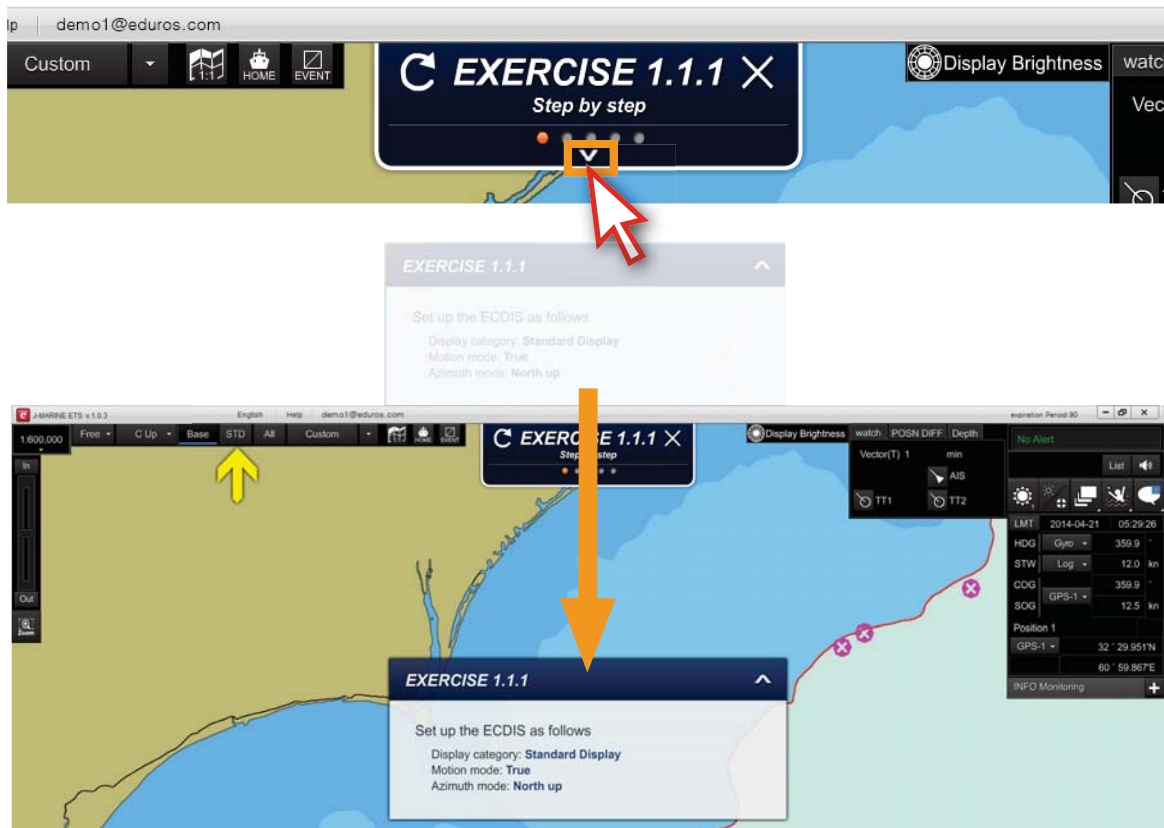
## 4. Learning

13) Click the ' ^ ' button to hide the pop-up window. <Figure 4-13>



<Figure 4-13>

14) Click the ' v ' button to show the pop-up window again. <Figure 4-14>



<Figure 4-14>

## 4. Learning



Details about 'Step by step' title bar.

Replay button



Close button

Process showing

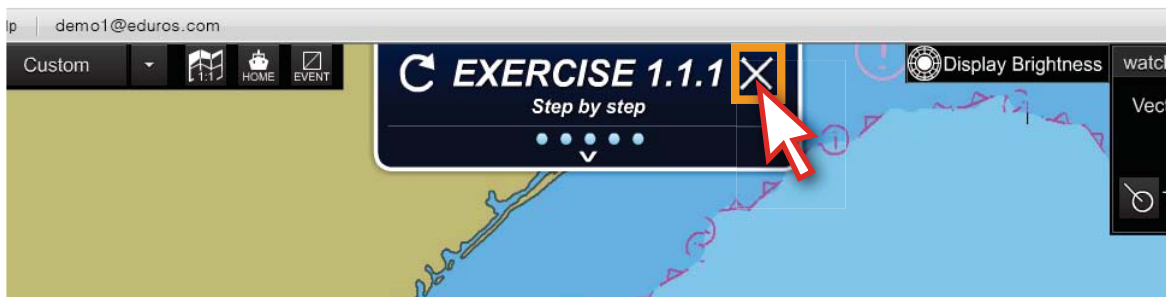
Show the question pop-up window

15) When you finished one course, the 'Pass' window will pop up to acknowledge that the course is completed. <Figure 4-15>



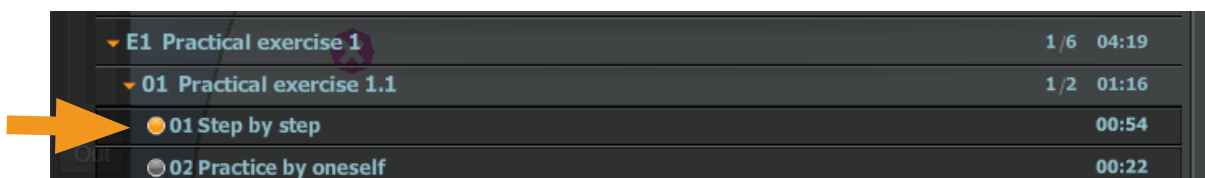
<Figure 4-15>

16) Click 'X' button to close the 'step by step' window. <Figure 4-16>



<Figure 4-16>

17) The icon will become into orange. As shown below. <Figure 4-17>

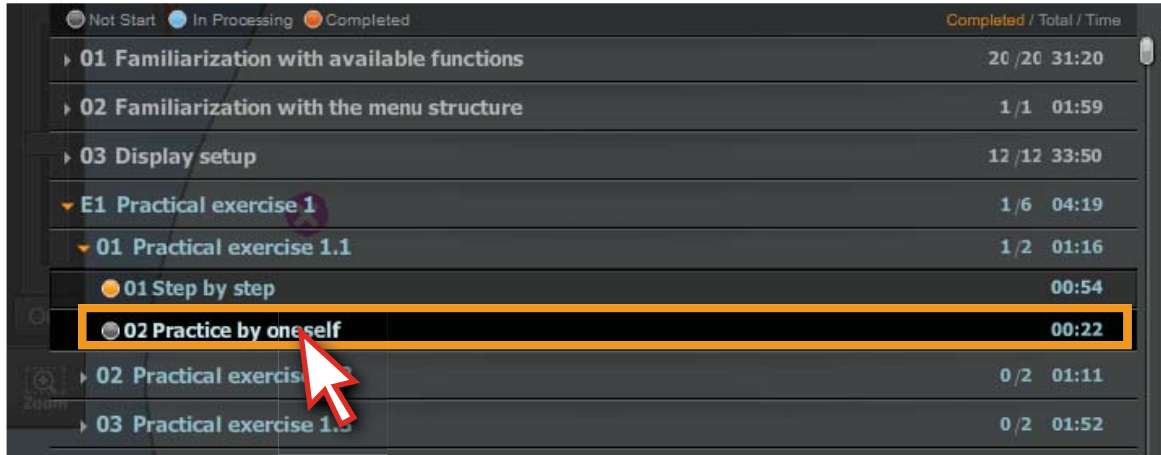


<Figure 4-17>

## 4. Learning

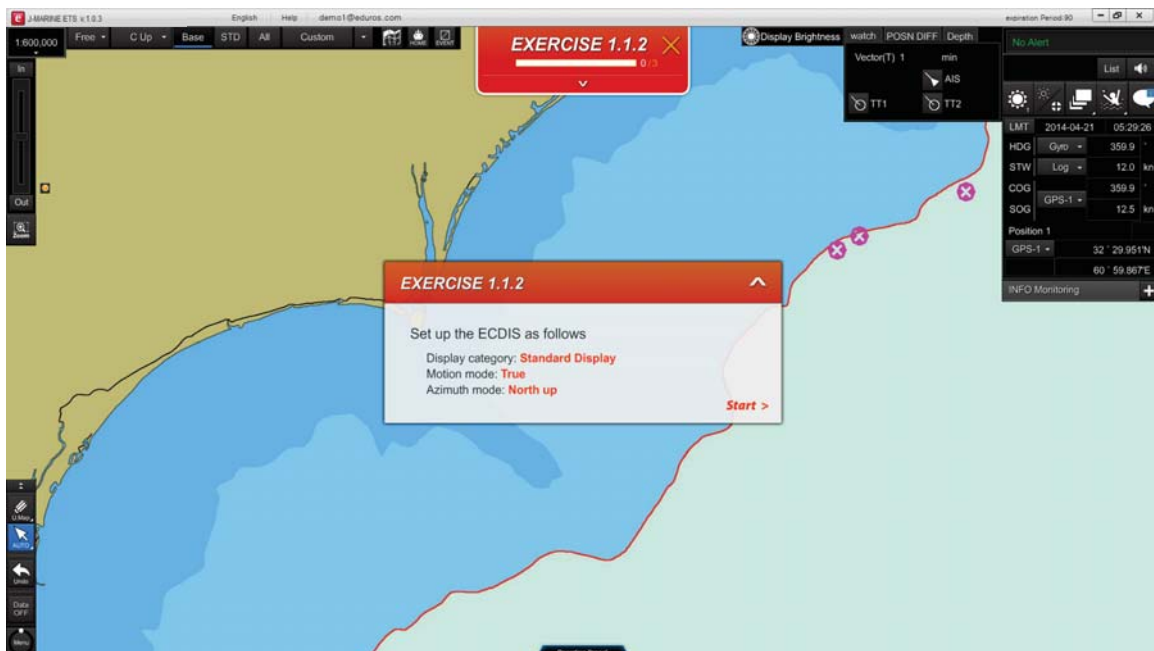
### 4. Exercise course - Practice by oneself

18) Click the 'Practice by oneself'. <Figure 4-18>



<Figure 4-18>

19) A new window will appear, full of the screen. And, the title bar and the pop-up window will show in another color orange. <Figure 4-19>



<Figure 4-19>

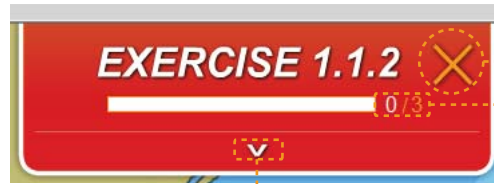
20) After the 'Start' button disappeared from the screen, the course will start, you should carry out the exercises by yourself any further instruction.

※ Please refer to the 'Practice by oneself' penalty in Page 37~38.

## 4. Learning



Details about 'Practice by oneself' title bar.

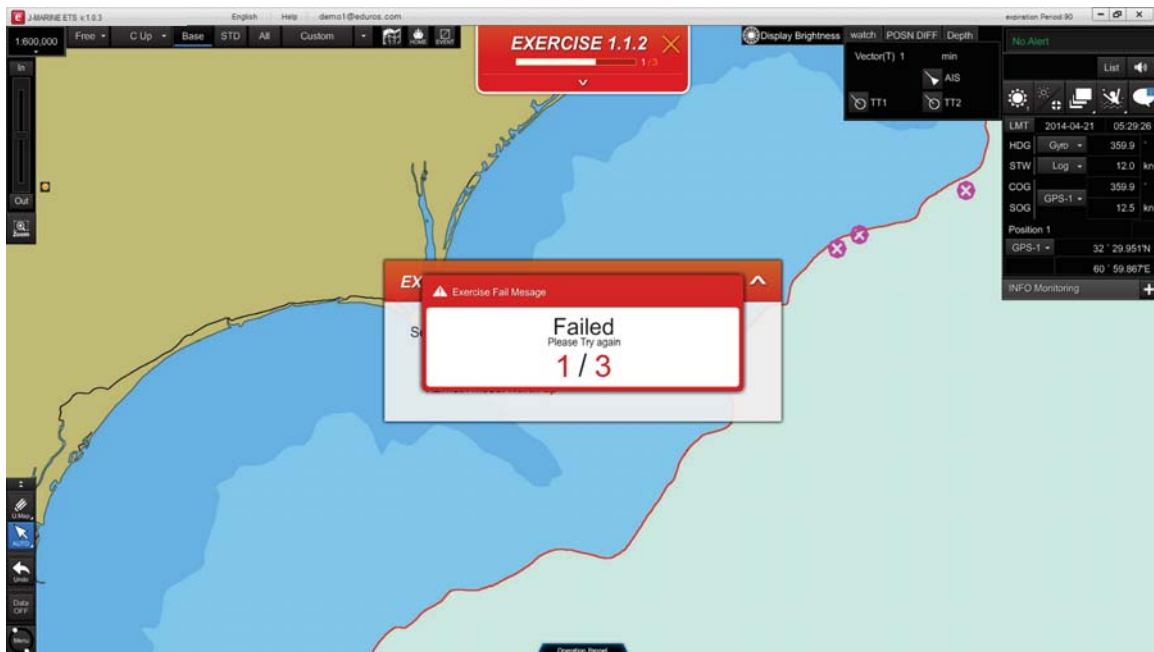


Close button

The maximum  
mistake time

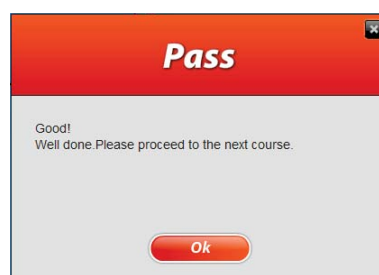
Show the question pop-up window

21) You should practice it yourself in the same order as previously instructed in the step by step chapter, if you click other buttons, the 'Failed' caution message will appear.



<Figure 4-21>

22) When you finished one course and the mistake you make is less than maximum, the 'Pass' window will pop up to acknowledge that the course is completed. <Figure 4-22>



<Figure 4-22>

23) However, if the mistake you made is more than three (3), the penalty messages will appear.

### The penalty of 'Practice by oneself' 1

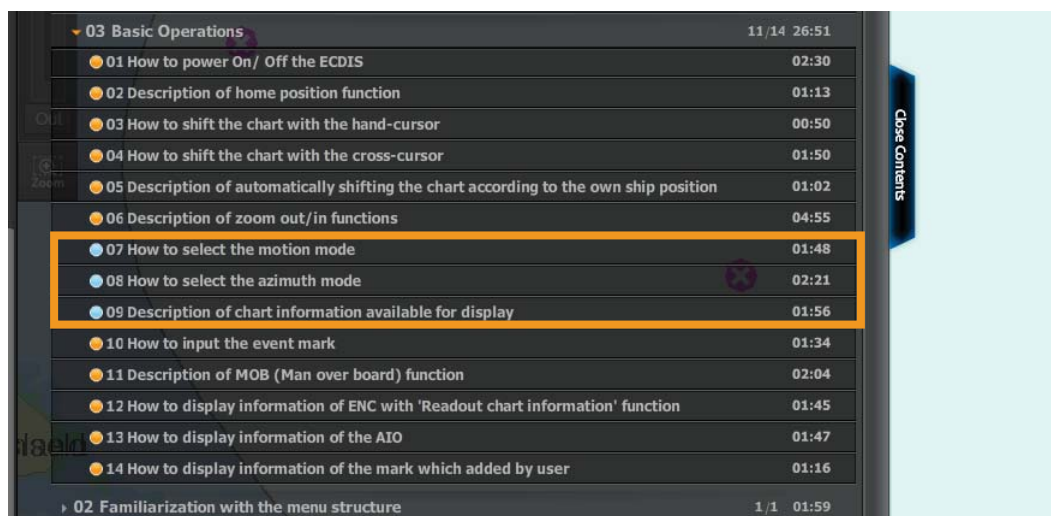
The mistake you made is more than three (3) at the first time.

'Fail:1' message window will pop up. Then you should review the course again accordingly.

Click 'Ok' to go and review the course. As shown below.



You can find some of the icons become into blue, click and review these courses again.





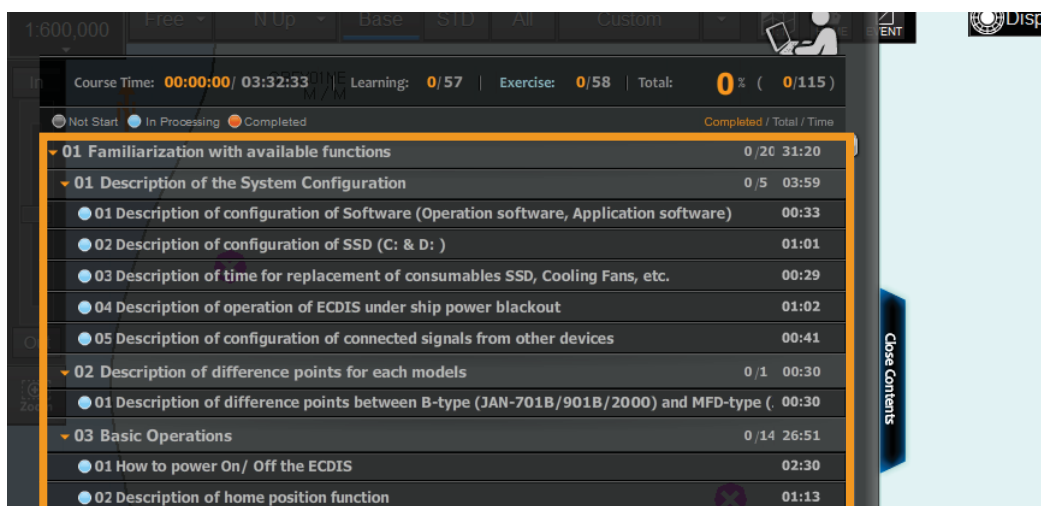
### The penalty of 'Practice by oneself' 2

After review, the mistake you made exceeds three(3) again. 'Fail 2' message window will pop up.

You should click 'Ok' to go and review all the courses in one chart accordingly.



You can find all the icons in this chart become into blue, click and review these courses again.



After review, if you still don't pass, 'Fail:1' and 'Fail:2' will pop up repeatedly until you succeed.



# 4. Learning

23) Users can also check their learning records on the website.

The screenshot displays the 'My Learning' section of a website. It features a breadcrumb trail 'Home > courses > My Learning' and a title 'My Learning'. Below this, there is a section for 'edurosECDIS Course information' with a help icon. A table lists the course details:

No.	Course Type	Period	Download
1	eduros ECDIS - g201 Online	2015-04-30 ~ 2015-07-29	<a href="#">Download</a>

Below the table is a progress flow diagram with four steps: STEP1. Learning Progress (29%), STEP2. Test (Not Available), STEP3. Verification (Not Available), and STEP4. Certification (No). A summary table below the diagram shows: Learning Progress: 29%, Test: Not Available, and User Verification: Not Available.

The 'My Learning Detail' section includes a breadcrumb trail 'Home > membership > My Learning Detail' and a title 'My Learning Detail'. It has a sub-section 'Orders' with a table:

No.	e-Learning Name	Period	Status	Progress	Score	Certificate
1	eduros ECDIS - g201 Online	2015-04-30 ~ 2015-07-29	In progress	29%	Not available	Not issued

There are two empty tables for 'Certificate' and 'User Verification', both showing 'No history'. A 'Test' section has a 'REVIEW' button and an empty table. At the bottom, the 'Course Progress' section shows a table with columns 'CONTENTS', 'COMPLETE', and 'DATE':

CONTENTS	COMPLETE	DATE
<b>LEARNING</b> 1. Familiarization with available functions	✓	2015-06-02 01:11:24
1. 1 Description of the System Configuration	✓	2015-06-02 01:09:47
1. 2 Description of difference points for each models	✓	2015-06-02 01:09:53
1. 3 Basic Operations	✓	2015-06-02 01:11:24
<b>LEARNING</b> 2. Familiarization with the menu structure	✓	2015-06-02 01:11:38
2. 1 Description of the menu structure	✓	2015-06-02 01:11:38

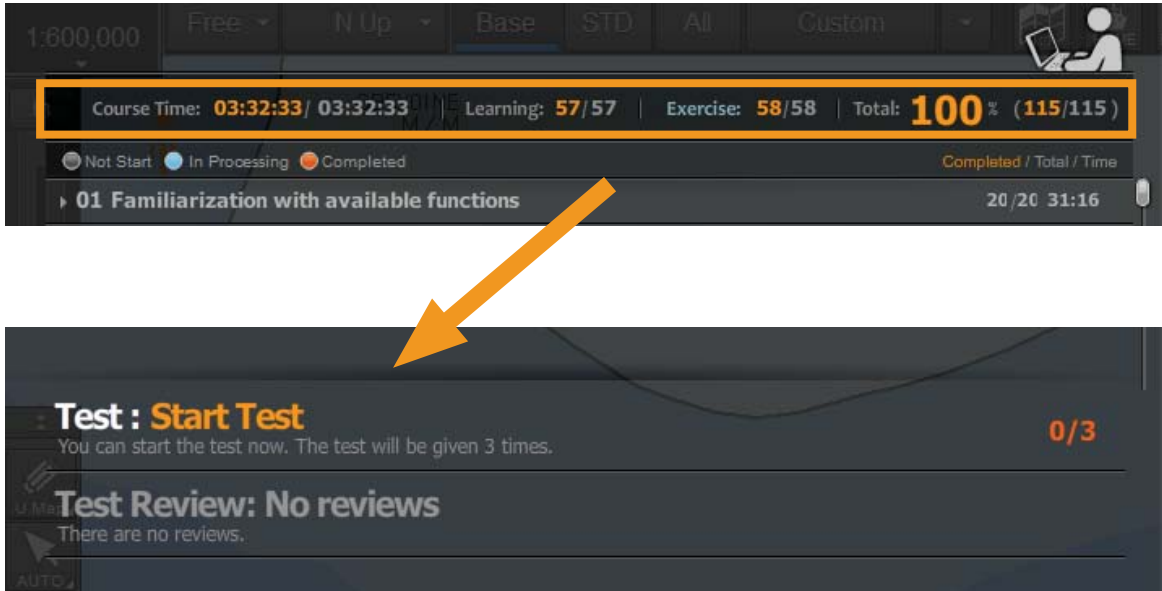


# 5. Test


1. Test overview
2. Start the Test
3. Test result

## 1. Test overview

1) Test qualification will be given when you complete all of the courses. <Figure 5-1>



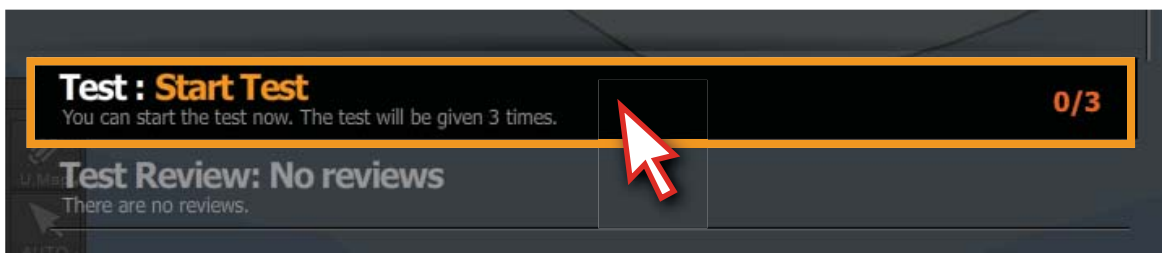
<Figure 5-1>

 **About Test**

- Quantity: 20 theoretical questions in total
- Time: 1 hour
- maximum chances: 3

Be advised that you should get more than 70(14/20) scores to pass the test.  
If you failed in all three times of given test chances in a row, you may have to pay for extra fees for additional tests.

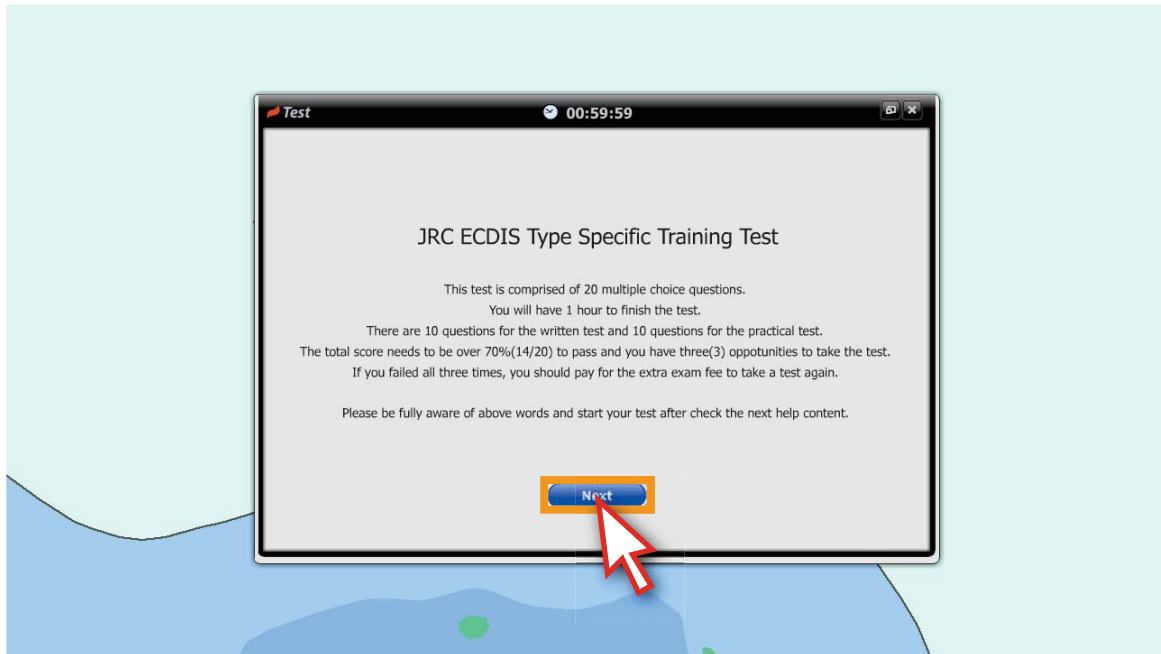
2) Click 'Start Test'. <Figure 5-2>



<Figure 5-2>

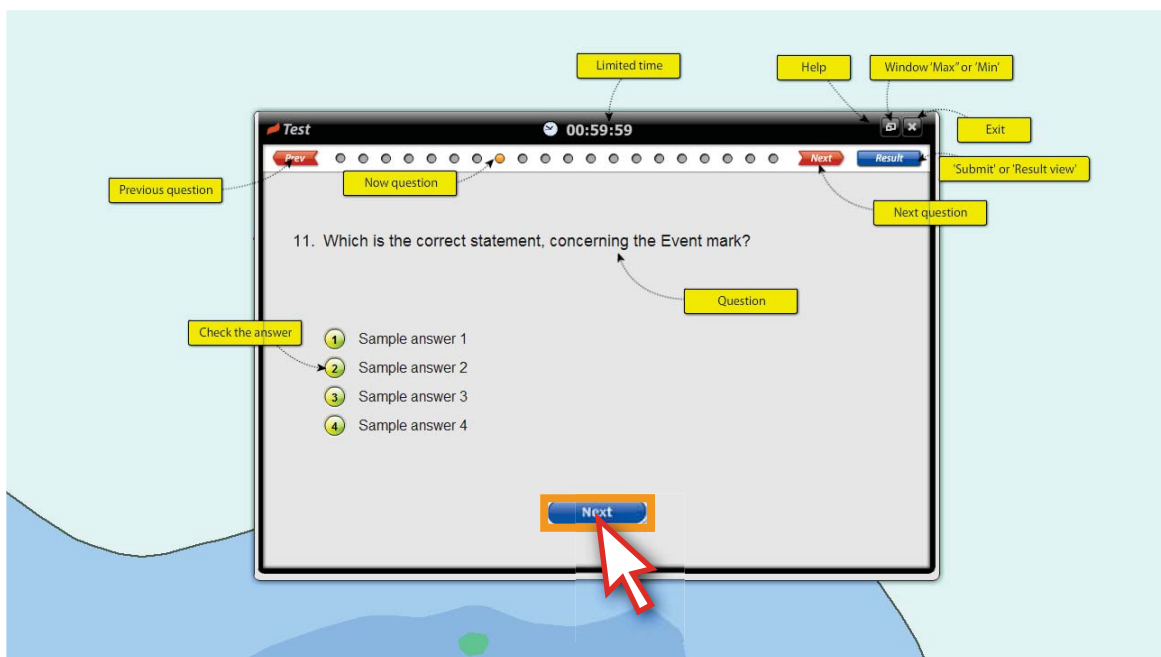
## 2. Start the Test

3) Read the notice and click 'Next' button. <Figure 5-3>



<Figure 5-3>

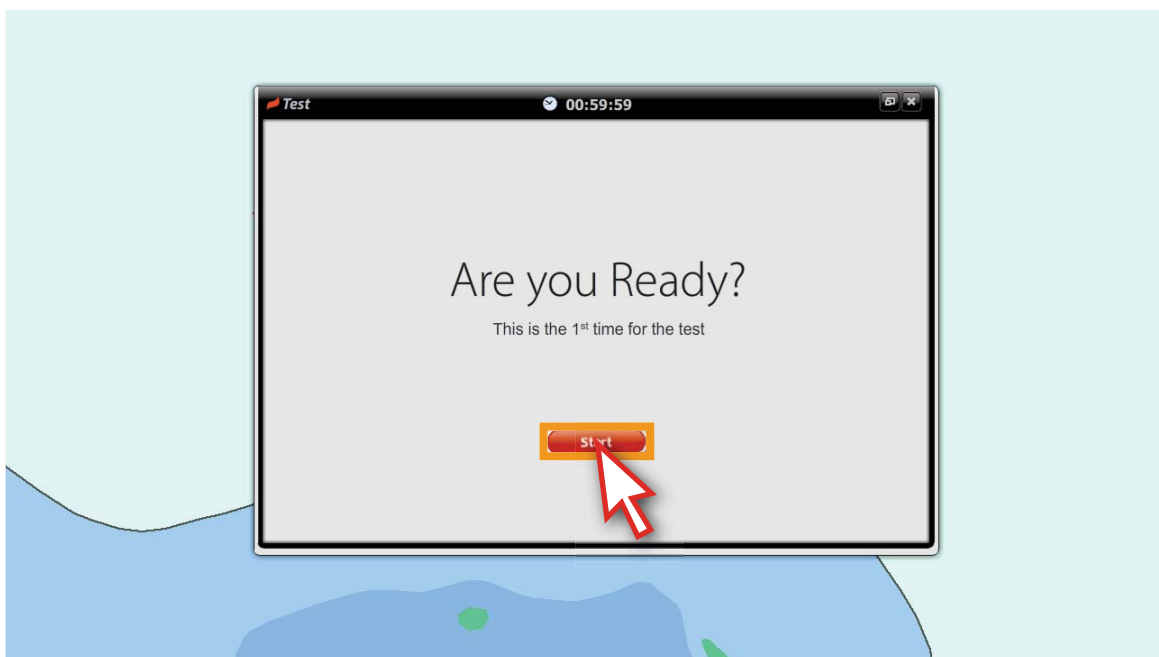
4) Details about the test will pop up, acquaint with them and click the 'text' button. <Figure 5-4>



<Figure 5-4>

## 5. Test

5) Click 'start' to take the test. <Figure 5-5>

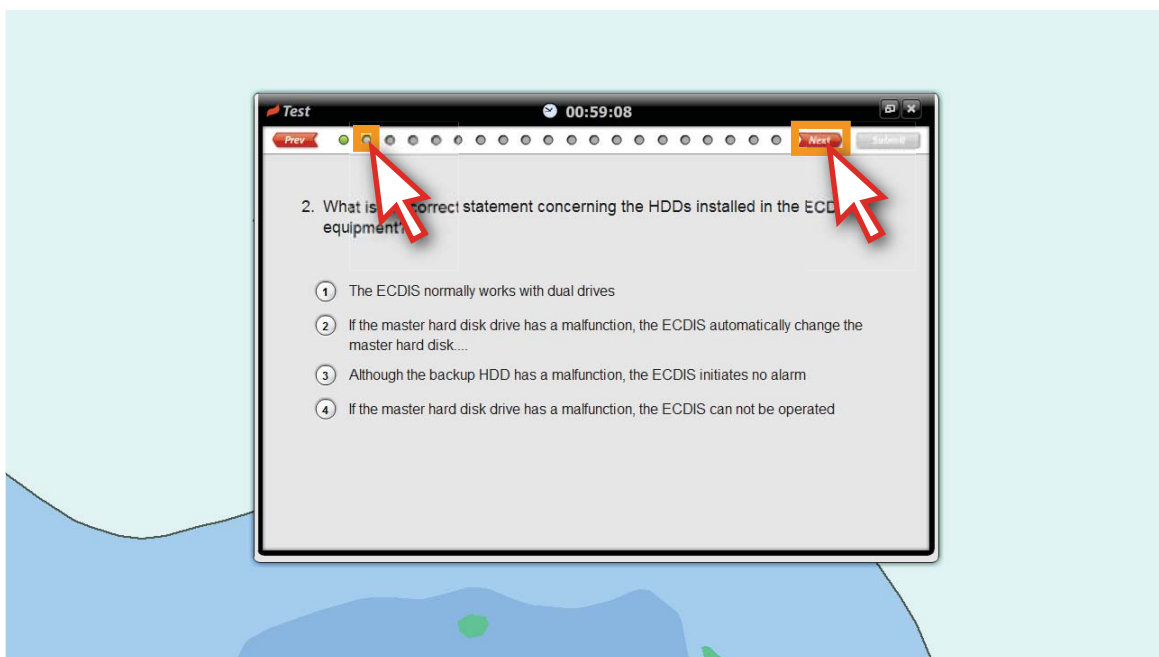


<Figure 5-5>

6) Read the question and select the answer.

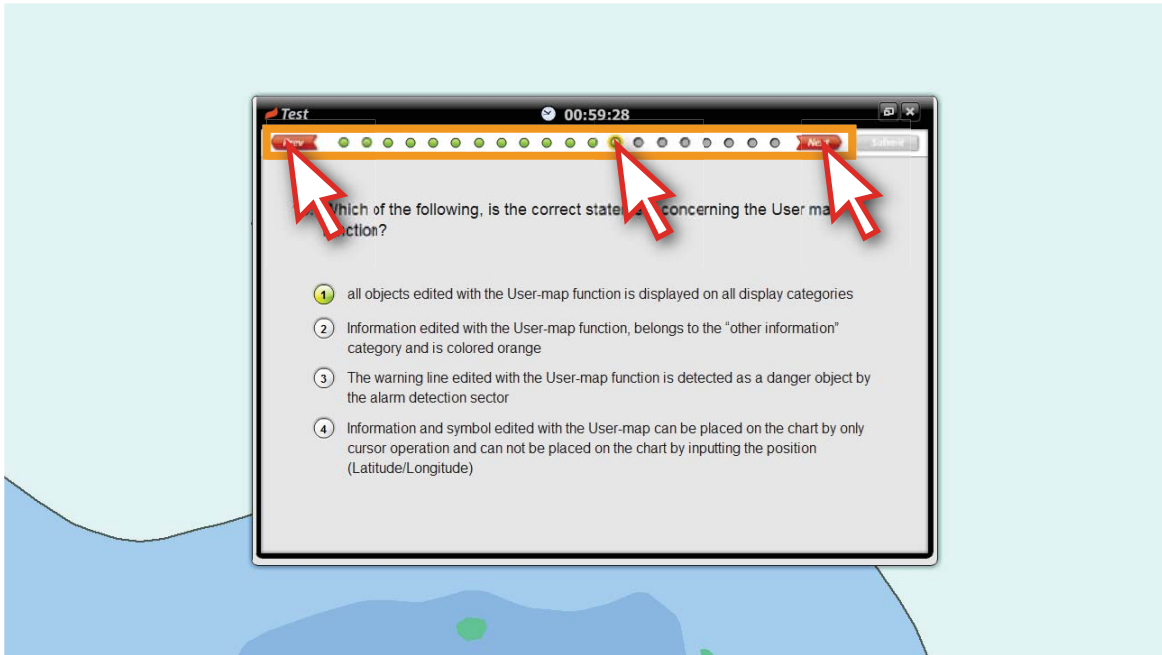
The icon of the selected answer will become into pink.

Click the round button or 'next' button to approach the next question.<Figure 5-6>



<Figure 5-6>

7) Click the questions accordingly if you want to change the answers. <Figure 5-7>

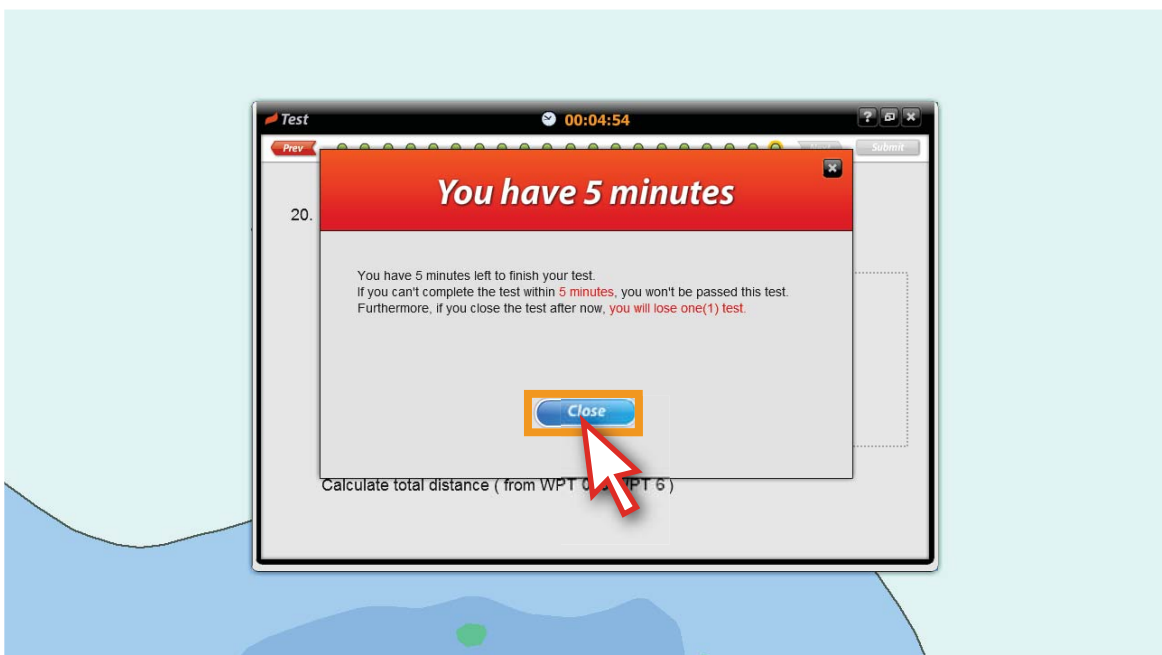


<Figure 5-7>

8) 5 minutes before the given test time, the reminder will pop up.

Be advised that you will lose one(1) of three(3) chances if you do not complete the test within 5 minutes from the time you have first seen the message. <Figure 5-8>

※ See details in page 46

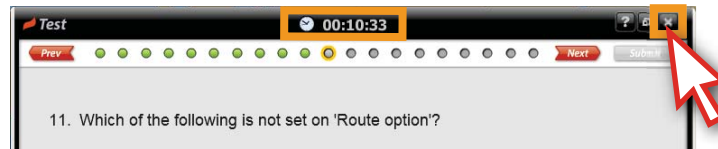


<Figure 5-8>

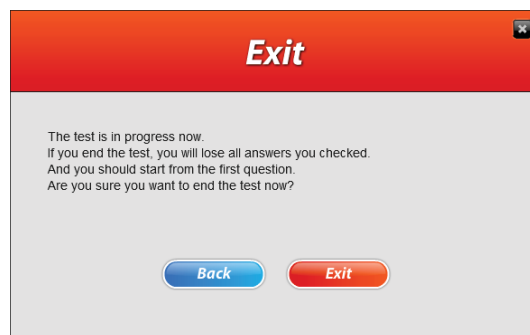




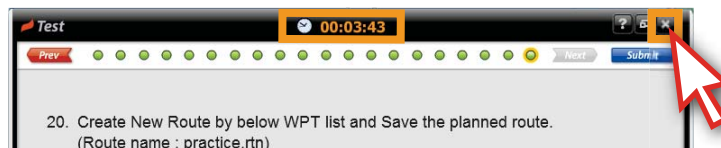
If the test is closed forcibly when test time is left more than 5 minutes.



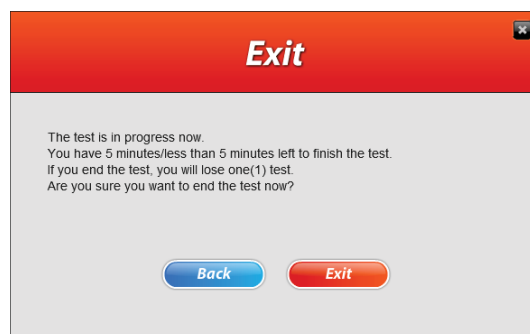
The data will not be recorded, you can take the test one time more.



If the test is closed forcibly when test time is left less than 5 minutes.

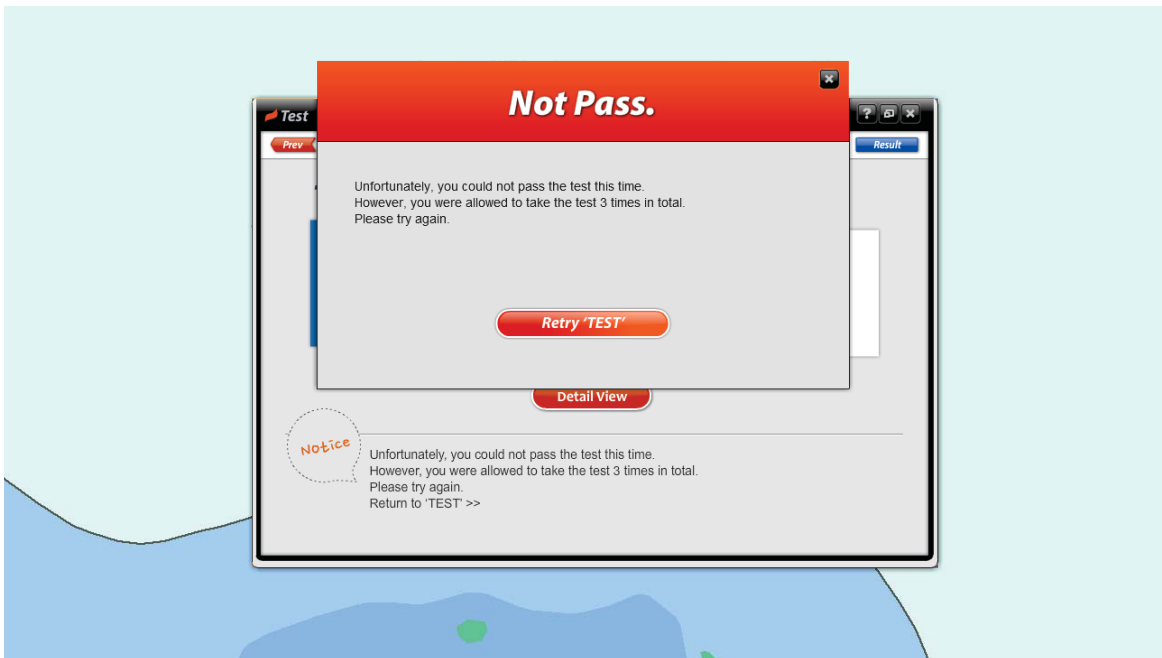


Be notice that you will lose one chance (3 times in total) of the test.



## 3. Test result

- 10) The test result will pop up once you click the 'Submit' button. If you didn't pass the test, click the 'Retry TEST' button to take the test one more time. Click 'X' button to close the test mode. <Figure 5-10>



<Figure 5-10>

- 11) You can check the details about the test results by clicking the 'Detail View' button. <Figure 5-11>



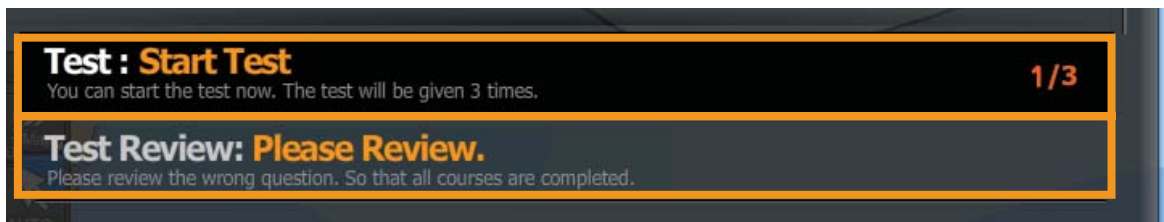
<Figure 5-11>



## 5. Test

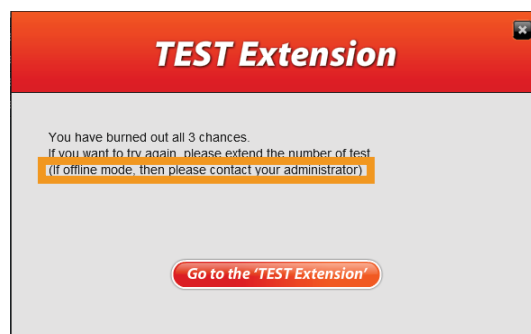
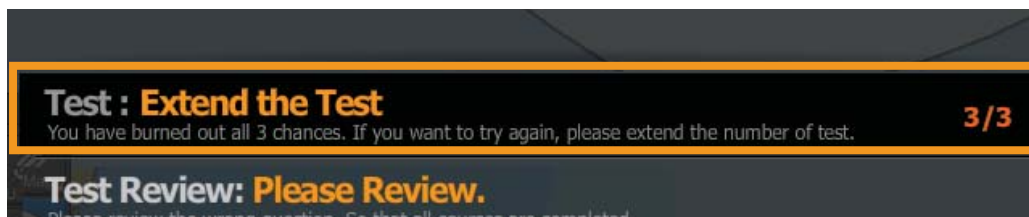
12) You can also check the 'Test Review' via contents panel.

Click the 'Start Test' bar to take the test again. <Figure 5-12>



<Figure 5-12>

If you failed in all 3 times of given test chances, please contact your administrator or program provider to extend your test chances.



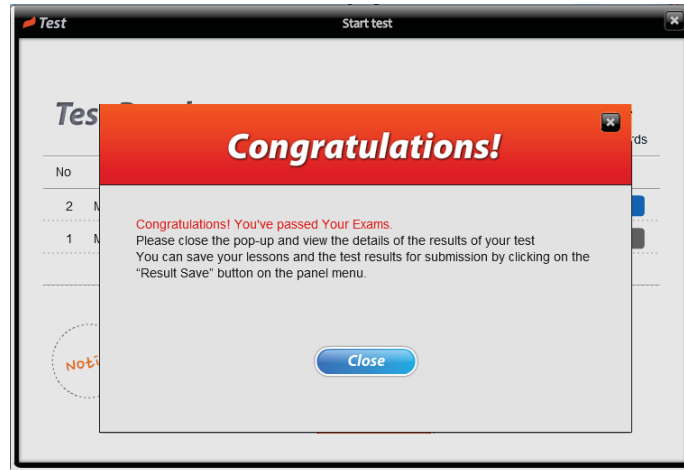
# 6. Test review

## 1. Test review

## 6. Test review

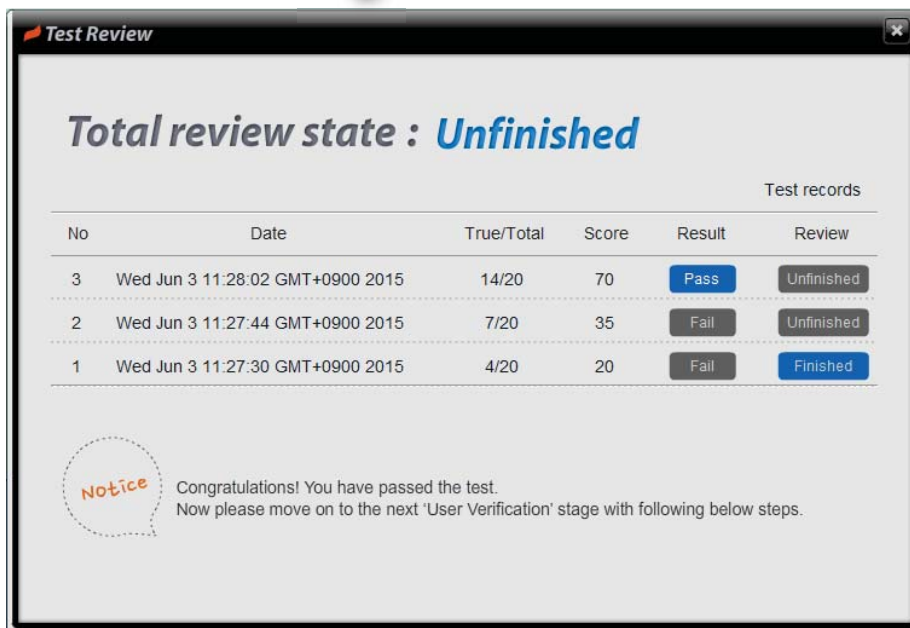
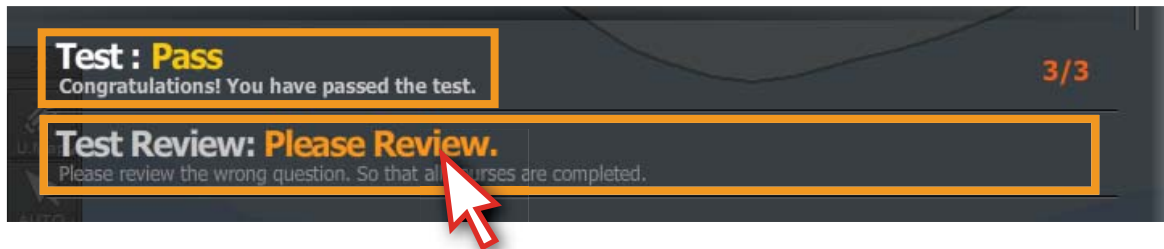
### 1. Test review

1) The 'Congratulations' window will pop up if you've passed the test. <Figure 6-1>



<Figure 6-1>

2) Click 'Test Review' button, the 'Test Review' window will pop up.  
You must take the 'Test Review' step after taking the test. <Figure 6-2>



<Figure 6-2>

## 6. Test review

3) Click the unfinished lists to complete the 'Test Review' step. <Figure 6-3>

**Total review state : Unfinished**

No	Date	True/Total	Score	Result	Review
3	Wed Jun 3 11:28:02 GMT+0900 2015	14/20	70	Pass	Unfinished
2	Wed Jun 3 11:27:44 GMT+0900 2015	7/20	35	Fail	Unfinished
1	Wed Jun 3 11:27:30 GMT+0900 2015	4/20	20	Fail	Finished

Notice: Congratulations! You have passed the test.

Which is correct alternative, concerning AIO displayed with the following setup?

Explanation: Question 14

Note: The AIO information is displayed in all of display mode, ("Base"/"STD"/"All"/"Custom").

category of information displayed is selectable

View-Options

- Own Ship
- Own Track
- Route
- User Map
- Master's MarkLine
- Target
- Target Track
- Chart Common
- Chart View
- AIO
- Tools
- Unit
- Control

- All AIO Objects
- Temporary Notice(T)
- Preliminary Notice(P)
- ENC Preliminary Notice(EP)
- No Information Objects

**Total review state : Finished**

No	Date	True/Total	Score	Result	Review
3	Wed Jun 3 11:28:02 GMT+0900 2015	14/20	70	Pass	Finished
2	Wed Jun 3 11:27:44 GMT+0900 2015	7/20	35	Fail	Finished
1	Wed Jun 3 11:27:30 GMT+0900 2015	4/20	20	Fail	Finished

<Figure 6-3>

4) Users can also check the test results on the website. <Figure 6-4>

The screenshot shows a web interface for 'Test Review'. At the top, there is a breadcrumb trail: 'Home > membership > My Learning Detail > Test Review'. Below this is the title 'Test Review'. A 'Test History' section contains a table with columns: No., Date, Score, Result, and Confirm. A 'To Detail Page' button is located to the right of the table. The table lists two tests: No. 2 (Date: 2015-06-01 23:26:32, Score: 35 / 100, Result: fail, Confirm: Not yet) and No. 1 (Date: 2015-06-01 20:12:59, Score: 25 / 100, Result: fail, Confirm: Completed). Below the table, there are three exam details sections. Each section includes an 'EXAM' title, a question, a list of four multiple-choice options, and a 'Note' box. Exam 1: 'What may have an effect on displaying radar image on ECDIS if Radar system displays a short-range image, and a long-range is selected on ECDIS?'. Options: 1. Distorted image is displayed (Correct Answer), 2. Same image as radar system is displayed with adjusting Gain (Your Choice), 3. Enhanced image is displayed, 4. Same image as radar system is displayed without any adjustment. Note: 'The radar image on ECDIS may be distorted if the radar system displays a short-range image and a long range image on the ECDIS at the same time.' Exam 2: 'Which sensor is not included in mandatory sensors should be connected to ECDIS?'. Options: 1. Gyro, 2. Log (Your Choice), 3. GPS, 4. AIS (Correct Answer). Note: 'IMO RESOLUTION MSC. 232(82) requires ECDIS should be connected to the ship's position fixing system, to the gyro compass and to the speed and distance measuring device.' Exam 3: 'What is AIO which can be displayed on chart?'. A 'TOP' button is located at the bottom right of the exam details area.

Home > membership > My Learning Detail > Test Review

## Test Review

Test History To Detail Page

No.	Date	Score	Result	Confirm
2	2015-06-01 23:26:32	35 / 100	fail	Not yet
1	2015-06-01 20:12:59	25 / 100	fail	Completed

Test No.3 Date : 2015-06-01 23:28:57

**EXAM 1**

What may have an effect on displaying radar image on ECDIS if Radar system displays a short-range image, and a long-range is selected on ECDIS ?

1. **Distorted image is displayed** CORRECT ANSWER
2. Same image as radar system is displayed with adjusting Gain YOUR CHOICE
3. Enhanced image is displayed
4. Same image as radar system is displayed without any adjustment

**Note** The radar image on ECDIS may be distorted if the radar system displays a short-range image and a long range image on the ECDIS at the same time.

**EXAM 2**

Which sensor is not included in mandatory sensors should be connected to ECDIS?

1. Gyro
2. Log YOUR CHOICE
3. GPS
4. **AIS** CORRECT ANSWER

**Note** IMO RESOLUTION MSC. 232(82) requires ECDIS should be connected to the ship's position fixing system, to the gyro compass and to the speed and distance measuring device.

**EXAM 3**

What is AIO which can be displayed on chart?

TOP

<Figure 6-4>

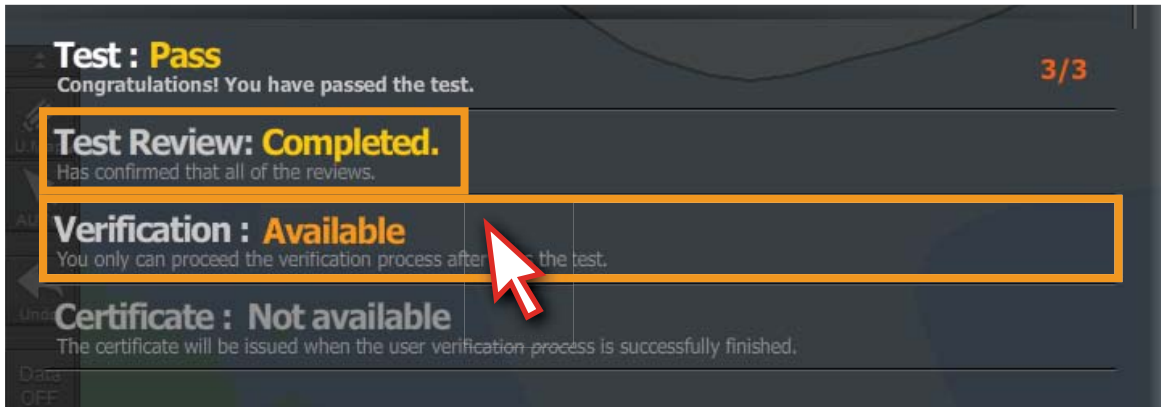
# 7. User Verification and Certification

## 1. User Verification and Certification

# 7. User Verification and Certification

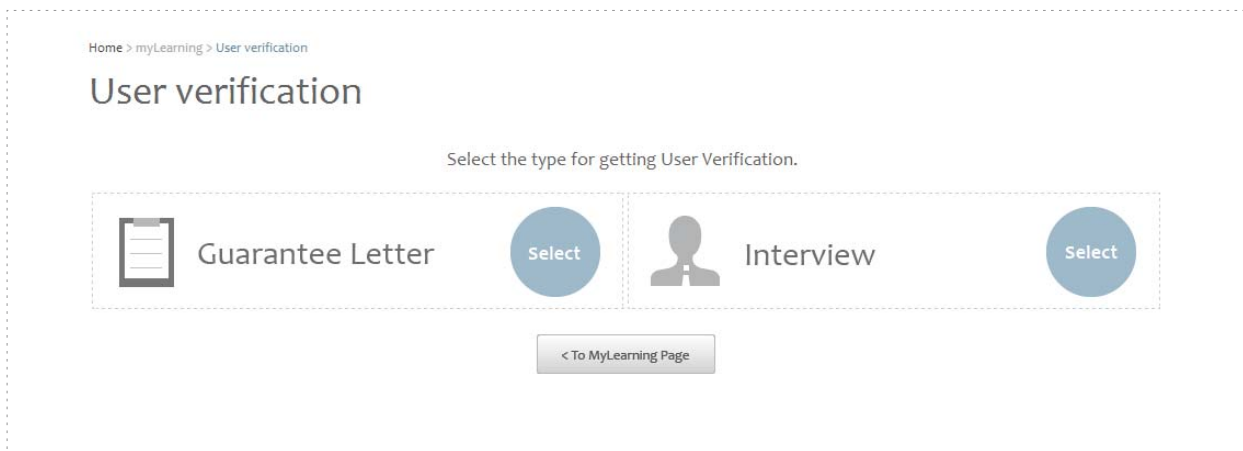
## 1. User Verification and Certification

1) When the test review step is completed, click the 'Verification' bar to go to the verification page. <Figure 7-1>

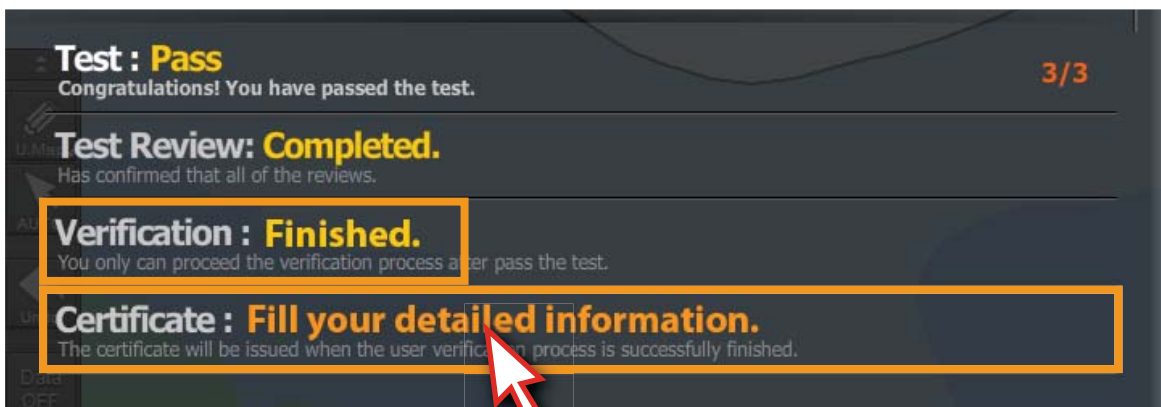


<Figure 7-1>

2) 'Verification' Select one method to get the certificate. <Figure 7-2>  
Please refer to 'website manual' for more details.



3) When the 'Verification' step is completed, click 'Certificate' bar. <Figure 7-3>



<Figure 7-3>

## 7. User Verification and Certification

- 4) Fill out the additional information in the given blank boxes, then click the 'save' button, to complete all the processes for the certification. <Figure 7-4>

**Add Information**  
(for certification)

Personal Info.

Full Name*	<input type="text"/>
Sex.*	<input type="radio"/> Male <input type="radio"/> Female
Rank/Position*	<input type="radio"/> Capt. <input type="radio"/> C/O <input type="radio"/> 2/O <input type="radio"/> 3/O <input type="radio"/> A/O
Date of Birth*	Year: <input type="text" value="2000"/> Month: <input type="text" value="1"/> day: <input type="text" value="1"/>
Address*	<input type="text"/>

eLearning Info.

Course ID	001001
Course Name	Type-Specific ECDIS Training - JRC

**Test : Pass**  
Congratulations! You have passed the test.

**Test Review: Completed.**  
Has confirmed that all of the reviews.

**Verification : Finished.**  
You only can proceed the verification process after pass the test.

**Certificate : Issuance completion**  
The certificate will be issued when the user verification process is successfully finished.

<Figure 7-4>



## 8. Tips

1. Description of Online mode and Offline mode
2. Program update
3. Learning records synchronization
4. Explanation of Terms

# 8.1 Description of Online mode and Offline mode

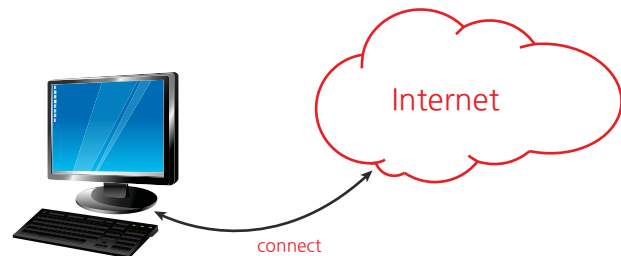


## Description of Online mode and Offline mode

### Online Mode

is a **synchronous learning mode** in which The CBT involves coursework delivered via web . In such cases, The learners ideally complete the course at their own pace by **using the internet** as a support tool for Sync.

- Program Delivery : Download
- Log in : Log in after sign up
- Course Recording and Monitoring : Available anytime with Synchronization function
- System Update : Auto

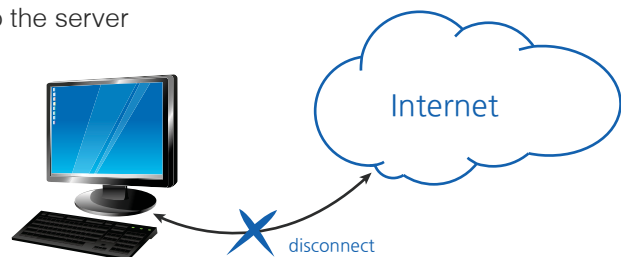


---

### Offline Mode

is an **asynchronous learning mode** that can be delivered in the DISC media or USB. This approach combines self-study and finish the course with asynchronous interactions to the server at the following key events

- Program Delivery : DISC media or USB
- Log in : A Key file can be used
- Course Recording and Monitoring : Available only in online mode after uploading the learning results into the server
- System Update : Manual



## 8.2 Program update

### Program update

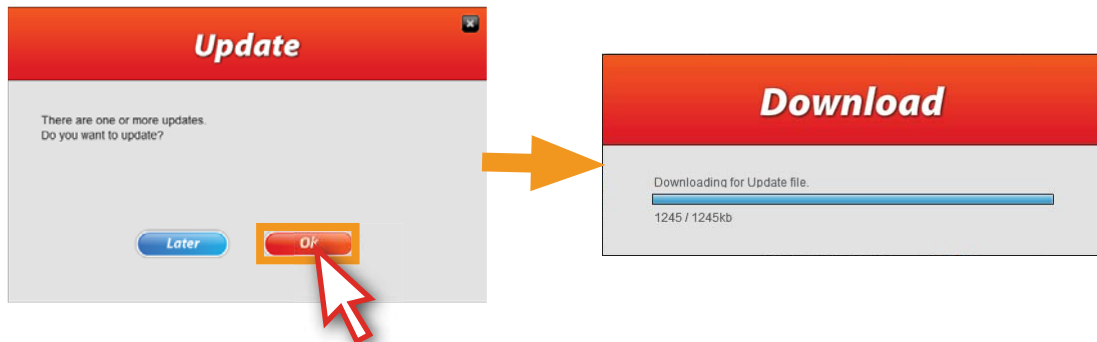
Update message will pop up after the log-in when any updates are available.

- 1) If the program or contents are modified or upgraded, the notice will pop up automatically when you log in.

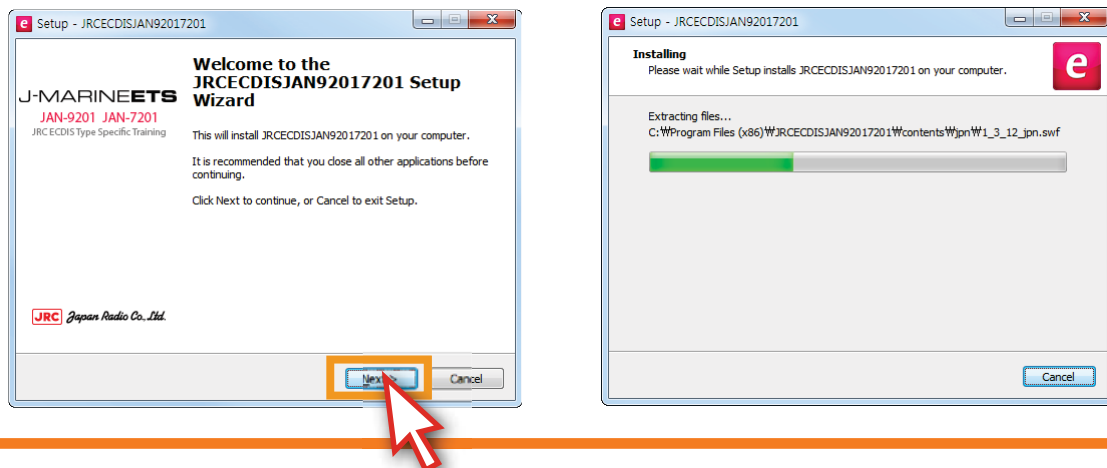


- 2) Click 'OK' button to update the program.

The program will be shut off automatically, and the updated program will be downloaded.



- 3) Install the program as per the instruction after the download.



## 8.2 Program update

- 4) Click 'Finish' button to complete the installation.  
Program will automatically be launching in a row.



- 5) Sign in with your own ID and password.

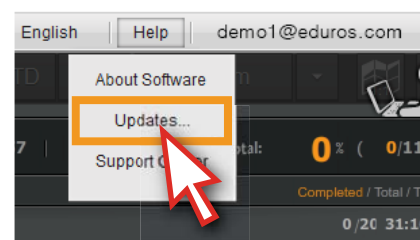


- 6) The update notice will be shown on a pop-up window.



Update by using the Help menu on the program

If you want to update manually, you can also use the help menu. Click 'Help' menu above, choose 'updates...' to update the program manually as instruction.

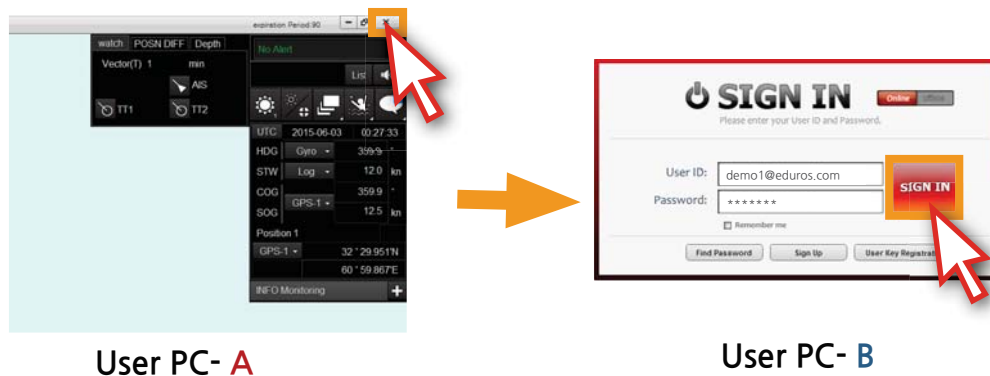


## 8.3 Learning records synchronization

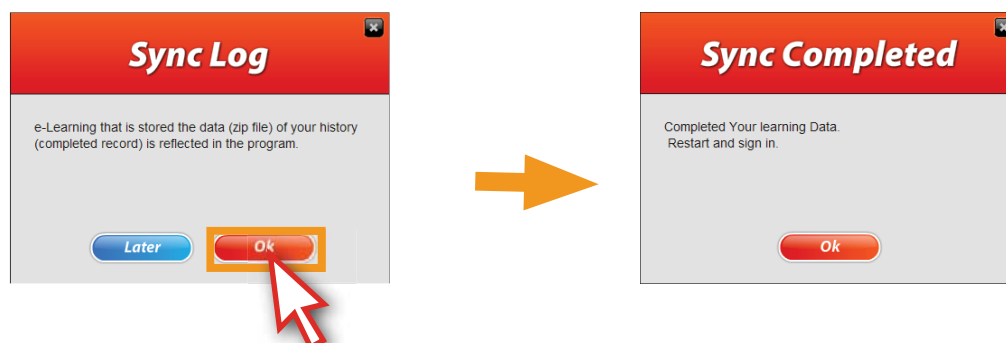
### Learning records synchronization



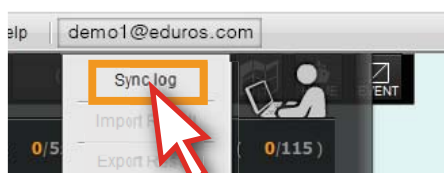
1. Close the program on your PC(A), install and run the program on a new PC(B). User are able to use the same ID to login the program on the new PC(B).



2. The 'Sync Log' window will pop up automatically, click the 'OK' button, the learning records will be synchronized from your PC(A) to the PC(B).



※ Synchronize the learning records by clicking the user ID menu .



### Explanation of Terms

#### **Certificate**

After finishing user verification process, the certificate will be issued under the name of training company.

#### **Course Menu**

It is on the left of the screen, including all of the courses and the test part.

#### **DetailView**

Check the answers again.

#### **Exercise Course**

You can review the courses once more after practice.

#### **Expiration Period**

The number of valid days.

#### **Export Result**

Export the users' learning records to the eduros program.

#### **Guarantee Letter**

It's an official document issued by an authorized trainer or the company's representative assuring that the user who apply for the verification is the person who complete the course and pass the test.

#### **Import Result**

Import the users' learning records to the eduros program.

#### **Interview**

There are two types of interviews "online Video and Offline face to face interview".

#### **ISM code**

International Safety Management Code

#### **Learning Course**

Individual study by means of animation showing.

#### **Offline Mode**

Disconnect to the Internet, computer based training, learn the course and save the results in local computer.

#### **Online Mode**

Connect to the Internet, Learn and track records on line.

#### **Operation panel**

The keyboard of ECDIS.

#### **Practice by oneself**

In exercise part, you can learn the course step by step as instruction firstly, then learn alone freely.

#### **Program menu**

Such functions as Language selection, Updates, Sync log, Import Result, Export Result, Sign Out, term of validity and Help are included.

#### **Review**

Look over your answers again.

#### **Step by step**

Learn the course orderly as instruction.

#### **Submit**

Submit your answers.

#### **Support Center**

Go to the Q&A board of the eduros website by clicking this button.

#### **Sync log**

Synchronize the learning record by clicking the 'Sync Log' button.

#### **Test**

Test qualification will be given when you complete all of the courses.

#### **Test pop-up window**

Pop-up notice message about the test.

#### **Test Review**

Check the explanation about the questions after the test.

#### **Type-specific training**

Necessary ECDIS training which is designated by the manufacturer.

#### **Updates...**

Update the program manually.

#### **User Verification**

When you pass the test, you have to ensure the identity of yourself before the certificate issuing.